

Misting Fan Owner's Manual

Ventilador con Nebulizador de Usuario

Brumiventilateur Manual d'emploi

Model / Modelo / Modèle:
FM-65

(115V~, 60Hz)

Read and save these instructions before use

Lea y guarde estas instrucciones

Lisez et gadez ces instructions



Intertek

www.xpower.com | 1-(855)-855-8868 | info@xpower.com

Index: NA-1-A46

Edition: 1.1.Final

Safety Instructions

WARNING - READ AND SAVE THIS INSTRUCTIONS BEFORE USING THIS PRODUCT.

The user of electrical products may create hazards that include, but are not limited to injury, fire, electrical shock. Failure to follow these instructions may damage and/or impair its operation and void the warranty.

- Before operating, remove all packaging material and check for any damage that may have occurred during shipping or any missing items.
- Check power supply to ensure it matches the appliance's specification.
- **Do not** operate any fan with a damaged cord or plug. Discard fan or return it to an authorized service facility for examination and/or repair.
- Use only on GFCI protected receptacles. Please contact a qualified electrician for verification and / or installation of a GFCI receptacle if necessary.
- **Do not** run cord under carpeting. **Do not** cover cord with throw rugs, runners, or similar coverings. **Do not** route cord under furniture or appliances. Arrange cord away from traffic area and where it will not be tripped over.
- To reduce the risk of fire or electric shock, **DO NOT** use this fan with any solid-state speed control device.
- This fan is an outdoor product and is **Not** intended for indoor use. **Do not** leave the fan unattended when it is plugged in.
- **Do not** touch this appliance or the plug with wet hands or while standing in water.
- **Do not** operate the appliance in any pooled water.
- **Do not** use the product in areas where gasoline, paint or other flammable goods and objects are used or stored.
- **Do not** insert or allow objects to enter any ventilation or exhaust opening as this may damage the appliance and void the warranty.
- **Do not** cover the air inlet or outlet on the appliance.
- **Do not** direct the air flow at human faces or bodies.
- **Do not** allow children to play or with this appliance.
- **Do not** move or carry this appliance while the unit is operating.
- Always place this appliance on a smooth and level surface for safe operation.
- **Automatically Operated Device** – To reduce the risk of injury, disconnect from power supply before servicing.
- Remove the power cord from the electrical receptacle by grasping and pulling on the power cord plug-end only, **do not** pull the cord directly.
- **Do not** attempt to repair or adjust any electrical or mechanical functions of this appliance, as this may cause danger and void the warranty.
- This product employs overload protection (fuse). A blown fuse indicates an overload or short-circuit situation. If the fuse blows, unplug the product from the outlet. Replace the fuse as per the user servicing instructions (follow product marking for proper fuse rating) and check the product. If the replacement fuse blows, a short-circuit may be present and the product should be discarded or returned to an authorized service facility for examination and /or repair.
- If the appliance is damaged or it malfunctions, **DO NOT** continue to use it. Unplug the product from the electrical outlet. Refer to troubleshooting guide or contact XPOWER.
- Store in a dry area, away from exposure to sunlight, extreme temperature and humidity, or other extreme environments, when not in use.
- An electronic instruction manual can be obtained through website www.xpower.com.

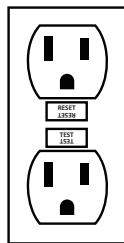
Grounding Instructions

This appliance must be grounded. In the event of malfunction or breakdown, grounding provides a path of least resistance for electric current to reduce the risk of electric shock. This appliance is equipped with a cord having an equipment-grounding conductor and a grounding plug. The plug must be plugged into an appropriate outlet that is properly installed and grounded in accordance with all local codes and ordinances.

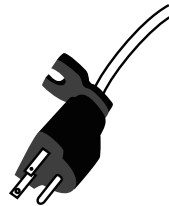
A qualified electrician should be consulted if there is any doubt as to whether an outlet box is properly grounded.

DANGER: Improper connection of the equipment-grounding conductor can result in a risk of electric shock. The conductor with insulation having an outer surface that is green with or without yellow stripes is the equipment-grounding conductor. When repair or replacement of the cord or plug is required, do not connect the grounding wire to either flat blade pin. Check with a qualified electrician or serviceman if the grounding instructions are not completely understood, or if in doubt as to whether the appliance is properly grounded. Do not modify the plug provided with the appliance – if it will not fit the outlet, have a proper outlet installed by a qualified electrician.

This appliance is for use on a nominal 115V circuit (NEMA 5-15R), and has a grounding plug (NEMA 5-15P) as illustrated below. Make sure that the appliance is connected to an outlet having the same configuration as the plug. No adapter should be used with this appliance.

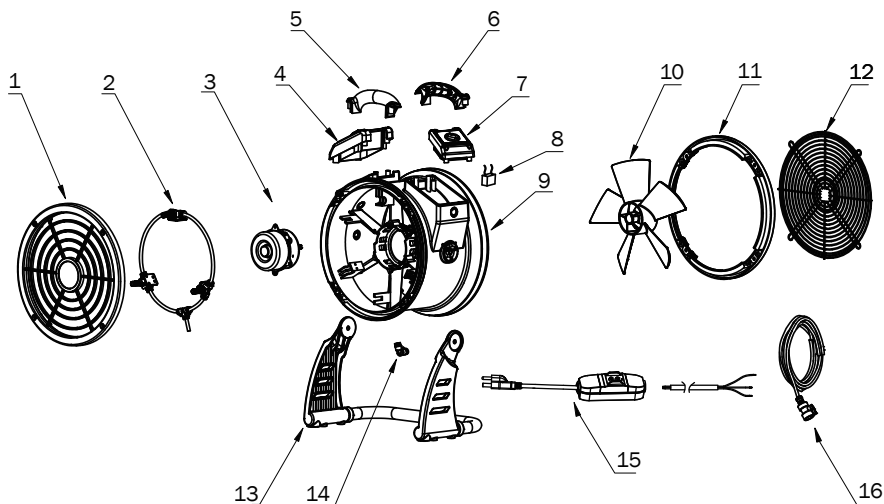


NEMA 5-15R



NEMA 5-15P

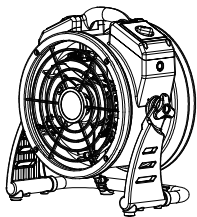
Parts Description



- (1) Front Grille Cover
- (2) Atomization Assembly
- (3) Motor
- (4) Cover
- (5) Housing Handle Front
- (6) Housing Handle Rear
- (7) Speed Switch Panel
- (8) Capacitor

- (9) Housing
- (10) Fan
- (11) Rear End Cover
- (12) Rear Grille Cover
- (13) Bracket
- (14) Water Outlet
- (15) Power Cord
- (16) Water Hose

Items Included



- Misting Fan x 1



- Spare Misting Nozzle x 1



- Nozzle Cleaner x 1

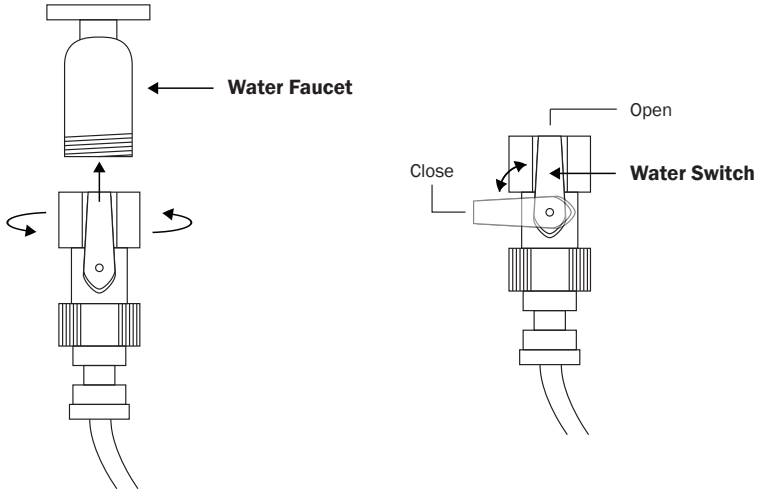


- Owner's Manual x 1

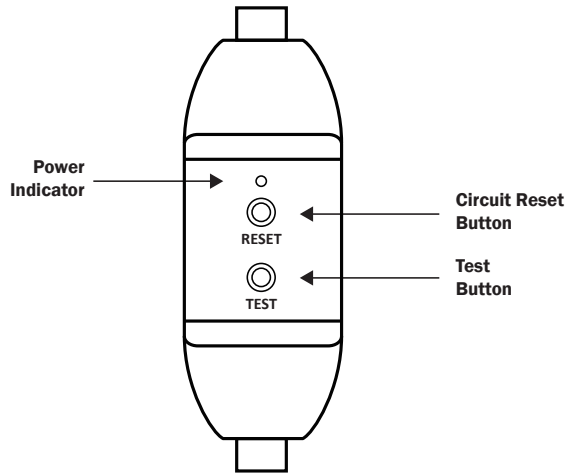
Installation and Operation Guide

Water Source Connection

- Screw the water faucet adapter onto the water faucet.
- Turn the switch to desired position to open or close the valve.
- Turn on the water faucet.



GFCI Protected Power Cord



- The power cord of the misting fan is protected by GFCI.
- If the misting fan stops working, press the **RESET BUTTON** to reset the circuit.

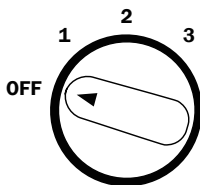
For GFCI (Ground Fault Circuit Interrupter) protected power cord receptacle:

- Once a ground fault occurs, the GFCI will immediately interrupt the power connection to this appliance.
- A ground fault is an inadvertent contact between an energized conductor (for example, a human being) and ground or equipment frame.

WARNING: Risk of electric shock. You should test the GFCI before each use.

- Press the Test Button, the Power Indicator should go off. Then press GFCI Reset Button, the Power Indicator should illuminate and Test Button should be reset to unpressed position.
- Do not use if the test fails.

Fan Speed Switch



- Turn to **“OFF”** position to switch the misting fan OFF. Turn to any speed position to switch the misting fan ON.
- Turn clockwise to set the desired fan speed. There are 3 fan speeds from: **1, 2, 3**. **“1”** is the lowest speed and **“3”** is the highest speed.

User Maintenance Instructions

Frequent maintenance is recommended on this appliance. Failure to follow the maintenance instructions may cause failure of the appliance and void the warranty.

- When not in use, unplug and store the appliance in a dry and cool indoor place. Make sure it's out of reach of children.
- Before performing any maintenance or cleaning, always disconnect the misting fan from its power source.
- Use a damp cloth to wipe the surface of the housing. Do not clean the unit with water directly.
- Check if the grille covers are clean. Remove dirt or any other objects that could block the air inlet and air outlet.

Atomization Assembly Maintenance

Cleaning the Container

- It's recommend to clean the container after each usage.
- Remove all the liquid within the container and wash with cold water.

Cleaning the Atomization Assembly

When not in use, unscrew the misting nozzles, store the nozzles in a dry indoor place out of reach of children. The nozzles must be dried completely before stored.

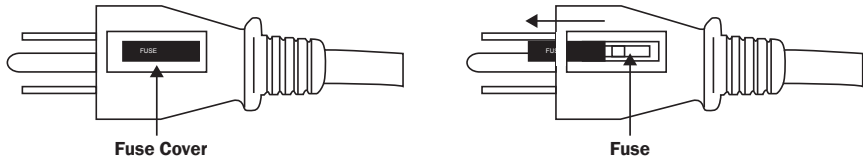


- Disassemble the nozzles (See illustration above) and unscrew the water faucet adapter.
- Soak the parts with soapy water or mild (or alkaline) detergent for several hours.
DO NOT use vinegar or other acidic detergent.



- Optionally, use the nozzle cleaner to clean the nozzle hole from the inner surface.
- When finished, dry the surfaces completely and reassemble the parts.

Replacing the Fuse



- Grasp plug and remove from the receptacle or other outlet device. Do not unplug by pulling on cord.
- Slide open the fuse cover on top of attachment plug. Remove the fuse carefully.
- To reduce risk of fire, replace fuse only with 5A/125V fuse.
Slide close the fuse cover on top of the attachment plug.

To reduce risk of fire. **DO NOT** replace the attached plug, which contains a safety device (fuse), with any other plug. Discard product if the attachment plug is damaged.

Troubleshooting Guide

PROBLEM	POSSIBLE CAUSE	SOLUTION
Misting Fan does not start	No electricity.	Check for power supply.
	The power cord is not properly plugged in.	Remove and reconnect the power cord.
	The machine is working under an extreme temperature.	Turn off the machine and unplug it. Let the machine cool down to normal temperature.
	The ground fault protection on the GFCI is triggered.	Check and reset the GFCI on the plug.
	The anti-toppling safety switch is triggered.	Check and reset the anti-toppling safety switch.
Unit runs but the speed is abnormal	Air inlet or air outlet is blocked.	Remove blockage.
Misting function is abnormal	The water hose is blocked.	Remove blockage.
	The atomization assembly is blocked.	Remove blockage. (See <i>Page 7: Atomization Assembly Maintenance</i>)

If troubleshooting does not resolve your problem, please contact XPOWER or other parties authorized by XPOWER for further instructions.

Technical Specification

Machine Specification

MODEL NUMBER	FM-65
Voltage / Frequency	115 V~, 60 Hz
Amperage	0.5 A
Rated Airflow	1000 CFM
Speed Control	3 Speeds
Cord Length	10 ft. / 3.0 m
Unit Dimension (L) x (W) x (H)	16.1 x 14.2 x 8.9 in. / 41.0 x 36.0 x 22.5 cm
Unit Weight	10.6 lbs. / 4.8 kg
Safety Certification	ETL/C-ETL

If your product(s) is not listed above, please visit www.xpower.com for more information.

Atomization Specification

	Misting Nozzle	Max Mist Volume	Max Throw Distance
FM-65	0.3 mm (Marked 3010)	5.9 L / h	32.8 ft. / 10.0 m

XPOWER Limited Warranty (USA)

1 YEAR LIMITED WARRANTY

XPOWER-branded products purchased in the U.S. from authorized distributors include a 1-year limited warranty. Contact XPOWER to confirm warranty information about your product(s).

This limited warranty covers defects in materials and workmanship in your XPOWER-branded products, purchased in the **U.S. ONLY**. Local warranty policy (if any) in your country will cover products purchased outside the U.S.

IMPORTANT:

- (1) Please finish the online warranty registration before usage. Visit <https://xpower.com/warranty-registration/>.
- (2) This Limited Warranty applies with its own timeliness. Contact XPOWER or visit www.xpower.com for more information.

Items mentioned but not limited to below are not covered by warranty:

- (1) Power cord, filters or any other components considered as a “consumable parts” by XPOWER.
- (2) Normal wear and tear.
- (3) Problems that result, directly or indirectly, at XPOWER’s sole discretion, from:
 - (3.1) External causes such as accident, abuse, misuse or problems with electrical power supply.
 - (3.2) Disassembling, servicing or modification not authorized by XPOWER.
 - (3.3) Usage that is not accordant with product instructions stated in Owner’s Manual.
 - (3.4) Failure to follow the product instructions or lack of necessary maintenance stated in Owner’s Manual.

Before contacting XPOWER, please try one or more of the following:

- (1) Consult this Owner’s Manual and follow the instructions of troubleshooting guide.
- (2) Access www.xpower.com for more advice and information that could be helpful to address your problems.

If you need additional assistance from XPOWER, please:

- (1) Email info@xpower.com.
- (2) Call XPOWER U.S. Customer Service Department at **855-855-8868** or other numbers provided on www.xpower.com.
- (3) Visit XPOWER U.S. Head Office at [668 S. 6th Ave., City of Industry, CA 91746](#) or the most current address provided on www.xpower.com.

Please also have your original proof of purchase and the serial number(s) of your product(s) ready when you contact XPOWER.

If you are instructed to return the unit for service or replacement, please:

- (1) Request a RMA (Return-Merchandise-Authorization) number.
- (2) Use the original or an equivalent packaging, prepay shipping charges at your own expense to the address provided by XPOWER, with the RMA number on the shipping label or the packaging.
- (3) Include all the original parts and components.

XPOWER will inspect, assess and advise the repairs needed and applicable cost, if any. For products under warranty, we will pay to ship the repaired or replaced product(s) to you if you use an address within the Contiguous United States. Otherwise, we will ship the product(s) to you at your own expense.



XPOWER Manufacture, INC.

668 S. 6th Ave.,

City of Industry, CA 91746 USA

www.xpower.com | 1-(855)-855-8868 | info@xpower.com

Read and save these instructions before use

Lea y guarde estas instrucciones

Lisez et gadez ces instructions

Index: NA-1-A46

Edition: 1.1.Final