



PLEASE READ AND SAVE THESE INSTRUCTIONS

**DOUBLE MOTOR PET DRYER**  
**OWNER'S MANUAL**

**MODEL: B-27** (115V/60Hz)



Nozzles  
included

XPOWER MANUFACTURE, INC.  
240 Clary Avenue  
San Gabriel, CA 91776, USA  
Tel: 626-285-3301 Fax: 626-285-3302  
[www.xpower.com](http://www.xpower.com)



## **TABLE OF CONTENTS**

INTRODUCTION .....	1
OPERATION / SPECIFICATIONS .....	2
SAFETY INSTRUCTIONS .....	3-6
PARTS LIST .....	7
MAINTENANCE .....	8
WARRANTY / SERVICE .....	9
XPOWER PET PRODUCTS .....	10
WARRANTY REGISTRATION FORM .....	11

## **INTRODUCTION**

The XPOWER B-27 Professional Double Motor Pet Dryer is the first addition to our new XPOWER X-TREME Line. Much like the B-5, the B-27 X-TREME force dryer was designed to be extremely quiet, lightweight and powerful. This 6HP double motor force dryer provides 3x the power to dry pets quickly while saving you time— whether small or large breeds with short or long hair!

### **Special Features:**

- Remarkably quiet.
- Powerful 6HP motor.
- Optimal Integration of motor and housing design.
- High impact and rugged ABS + PC housing material.
- Easy-to-change and washable filters.
- Variable speed switch.
- 8 ft. heavy duty flexible PU hose.
- Heavy duty styling nozzles for different pet drying applications.
- Compact, lightweight and portable, ideal for professional grooming.

## **OPERATION**

1. Place the dryer on a flat surface. Plug the electrical cord into a 3-prong outlet.
2. Connect the hose to the front hose connector and attach the desired nozzle. Turn on switch to desired speed. It is necessary to close the Bleed hole on hose while drying.
3. To reduce the risk of injury, close supervision is necessary when the unit is used near children. Do not allow children to play with or around the unit.

## **SPECIFICATIONS**

<b>Volt / Cycle</b>	115 V / 60 Hz
<b>Horse Power</b>	6 HP
<b>Amp</b>	16 A
<b>Motor</b>	Brush Double Motor
<b>Max Airflow</b>	180 CFM
<b>Speeds Control</b>	Variable
<b>Overheating Protection</b>	Dual Thermal
<b>Unit Weight</b>	13 lbs
<b>Unit Size</b>	17.7 x 6.3 x 9.3 inch
<b>Cord (Length / Dia)</b>	10 ft / 14 AWG
<b>Hose (Length / Material)</b>	8 ft / PU
<b>Housing Material</b>	ABS + PC

## **SAFETY INSTRUCTIONS**

### **WARNING: IMPORTANT SAFETY PRECAUTIONS!**

When using electrical appliances, especially when children or animals are present, basic safety precautions should always be followed to reduce the risk of fire, electric shock, and personal injury, including, but not limited to the following:

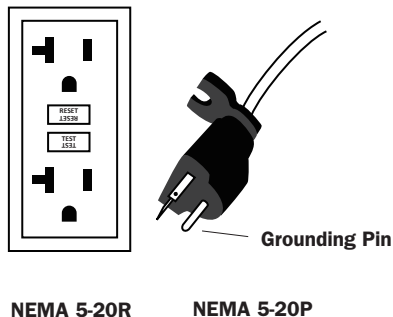
- DO NOT use attachments not intended for use with the dryer. Only use attachments recommended or sold by the manufacturer.
- DO NOT attempt to perform any service or maintenance not outlined in instruction manual.
- WARNING – To Reduce The Risk Of Electric Shock – Use Indoors Only. DO NOT use outdoors.
- WARNING: This Pet Dryer is not intended for use by children. Adult assembly and operation required. To reduce the risk of injury, close supervision is necessary when an appliance is used near children.
- DO NOT use as a toy.
- DO NOT leave appliance when plugged in. Unplug from outlet when not in use and before servicing.
- DO NOT use extension cords with dryer.
- DO NOT unplug unit by pulling on cord, to unplug, grasp the plug, not the cord.
- WARNING: Never use dryer with a damaged cord or plug, or after the appliance malfunctions or is dropped, damaged in any manner. Return to an Authorized Service Center for service, examination, repair, or electrical or mechanical adjustment.
- To disconnect, turn all controls to the off (“O”) position, then remove plug from outlet.

- DO NOT pull or carry by cord, use cord as a handle, close a door on cord, or pull cord around sharp edges or corners. DO NOT run appliance over cord. Keep cord away from heated surfaces.
- DO NOT handle plug or appliance with wet hands.
- Use extra care when cleaning on stairs.
- DANGER: DO NOT expose dryer to rain or water.
- DO NOT use or store dryer where it can fall or be pulled into tub or sink or standing water. If dryer falls into water unplug it, DO NOT reach into the water. Keep units out of baths and DO NOT operate on a wet floor, or wet surface.
- DO NOT use to pick up flammable or combustible liquids, such as gasoline, or use in areas where they may be present. DO NOT pick up anything that is burning or smoking, such as cigarettes, matches, or hot ashes.
- Unplug before connecting nozzles and hose.
- WARNING: DO NOT put any object into dryer openings. Keep loose clothing, jewelry and hair away from dryer openings. DO NOT use with any opening blocked; keep free of dust, lint, and anything that may reduce air flow.
- WARNING: DO NOT allow any material to clog or block air intakes as this may cause units to overheat and result in a fire or electrical hazard. Regularly clear hair or other substances from air intakes. DO NOT contact moving parts.
- Connect to a properly grounded outlet only. See Grounding Instructions.

## Grounding Instructions

- This appliance must be grounded. In the event of malfunction or breakdown, grounding provides a path of least resistance for electric current to reduce the risk of electric shock. This appliance is equipped with a cord having an equipment-grounding conductor and a grounding plug. The plug must be plugged into an appropriate outlet that is properly installed and grounded in accordance with all local codes and ordinances.
- A qualified electrician should be consulted if there is any doubt as to whether an outlet box is properly grounded.
- DANGER – Improper connection of the equipment-grounding conductor can result in a risk of electric shock. The conductor with insulation having an outer surface that is green with or without yellow stripes is the equipment-grounding conductor. If repair or replacement of the cord or plug is necessary, do not connect the equipment-grounding conductor to a live terminal. Check with a qualified electrician or serviceman if the grounding instructions are not completely understood, or if in doubt as to whether the appliance is properly grounded. Do not modify the plug provided with the appliance – if it will not fit the outlet, have a proper outlet installed by a qualified electrician.
- This appliance is rated more than 15A and is for use on a circuit having a nominal rating of 120V, and is factory equipped with a specific electric cord and plug. No adapter should be used with this appliance. If the appliance must be reconnected for use on a different type of electric circuit, the reconnection should be made by qualified service personnel; and after the reconnection, the appliance should comply with all local codes and ordinances.

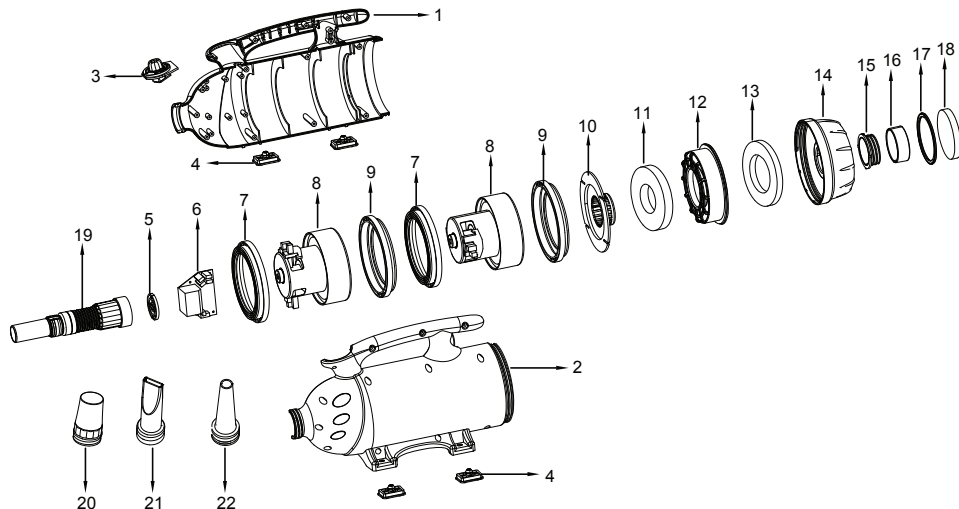
- This appliance is for use on a nominal 115V circuit (NEMA 5-20R), and has a grounding plug (NEMA 5-20P) as illustrated below. Make sure that the appliance is connected to an outlet having the same configuration as the plug. No adapter should be used with this appliance.



**SAVE THESE INSTRUCTIONS  
HOUSEHOLD AND COMMERCIAL USE**

## PARTS LIST

1	Left housing	9	Motor rubber sleeve	17	Rear cover baffle
2	Right housing	10	Dustproof cover	18	Inlet filter
3	Switch	11	Motor filter	19	Hose
4	Rubber feet	12	Dust case	20	Round nozzie
5	Air outlet grid	13	Dust case filter	21	Flat nozzle
6	PCB board	14	Rear cover	22	Cone nozzle
7	Motor rubber sleeve	15	Rear cover connector		
8	Motor	16	Crossed cover		



## **MAINTENANCE**

### **IMPORTANT!**

Always turn off the unit and disconnect from electrical outlet before maintenance or cleaning.

### **Product Maintenance:**

1. To keep the Pet Dryer, use a damp cloth to wipe the surface of the housing. Removable part(s) and filters may be cleaned with water and dried thoroughly before reassembling.
2. When not in use, unplug and store the Pet Dryer in a dry place indoors and keep out of reach of children.

### **Cleaning Dryer Dust Case, Rear Cover and Filters:**

The Filter System for the XPOWER Pet Dryer (including dust case, rear cover and filters) should be kept clean regularly. If the dust case is full of hair and/or dirt or the filters become heavily coated, the air output of the Dryer will reduce and this may cause damage to the motors or cause the motors to overheat. You should never operate the dryer without filters in place.

## **XPOWER LIMITED WARRANTY**

XPOWER Manufacture, Inc. warrants this product to be free from defects in material and workmanship for a period of one (1) year from the date of original purchase. Wearable parts including but without limitation, filters, motor brushes, hoses and power cords are excluded from the warranty. The liability of XPOWER is limited solely to the cost of the repair or replacement of parts/the unit at XPOWER's discretion. This warranty does not cover normal wear of parts and does not apply to any unit that has been tampered with or used for commercial purposes. This limited warranty does not cover damage caused by misuse, abuse, negligent handling or damage due to faulty packaging or mishandling in transit. This warranty does not cover damage or defects caused by or resulting from damages from shipping or repairs, service or alterations to the product or any of its parts, which have been performed by a repair person not authorized by XPOWER.

### **Limitations and Exclusions**

If any part or device manufactured by XPOWER Manufacture, Inc. is repaired or replaced, the new/repaired machine and/or part(s) shall be warrantied only for the remainder of the original warranty period.

## **SERVICE**

For Warranty service and parts replacement (US user only), you must:

- A. Call 1-626-285-3301 for a RMA (Return-Merchandise-Authorization) number.
- B. Have original proof of purchase.
- C. Use the original undamaged packaging or an Industrial certified packaging method.

The end user will be responsible to ship back the unit (with RMA Number showing on the shipping label) to the XPOWER Service Department. XPOWER to inspect, assess and advise the repairs needed and the applicable cost, if any.

**For users outside the US, please contact XPOWER Distributor in your country or region for Warranty service and parts replacement.**

# XPOWER Pet Dryers available in US market

## Blasters (Forced Air Pet Dryers + Vacuums)

B-2 (2 HP / 8 Amps / 100 CFM) - for home use

B-3 (2 HP / 8 Amps / 130 CFM)

B-4 (3 HP / 10 Amps / 150 CFM)

**B-27 (6 HP / 16 Amps / 180 CFM) - double motor**

## Finish / Stand Pet Dryer

B-16 (1/4 HP / 12 Amps / 300 CFM)

B-16S (1/4 HP / 15 Amps / 380 CFM)

## Cage Dryers

X-430TF w/ 430MDK (1/3 HP / 3.8 Amps / 2000 CFM)

X-800TF w/ 800MDK (3/4 HP / 7.5 Amps / 3200 CFM)



visit [XPOWER.COM](http://XPOWER.COM) for detailed information

## Warranty Registration (for US user only)

For your product warranty, please complete and mail / fax this form to **XPOWER MANUFACTURE, INC.**

Address: 240 Clary Ave., San Gabriel, CA 91776.

Tel: 626-285-3301

Fax: 626-285-3302

(For your convenience, register your product online at [xpower.com](http://xpower.com))

Your Name / Company Name \_\_\_\_\_

Contact Name \_\_\_\_\_ Title \_\_\_\_\_

Address \_\_\_\_\_ City \_\_\_\_\_ State \_\_\_\_\_ Zip \_\_\_\_\_

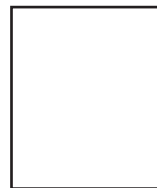
Phone \_\_\_\_\_ Fax \_\_\_\_\_ E-mail \_\_\_\_\_

DOUBLE MOTOR PET DRYER Model # \_\_\_\_\_ Serial # : \_\_\_\_\_

Date of Purchase \_\_\_\_/\_\_\_\_/\_\_\_\_ Purchased From \_\_\_\_\_



From: \_\_\_\_\_  
\_\_\_\_\_  
\_\_\_\_\_



TO:  
XPOWER MANUFACTURE, INC.  
240 Clary Avenue  
San Gabriel, CA 91776, USA  
Tel: 626-285-3301, Fax: 626-285-3302

