



PLEASE READ AND SAVE THESE INSTRUCTIONS

PET DRYER

OWNER'S MANUAL

MODEL: B-24, B-25

(115V/60Hz)

XPOWER MANUFACTURE, INC.
240 Clary Avenue
San Gabriel, CA 91776, USA
Tel: 626-285-3301 Fax: 626-285-3302
www.xpower.com



Nozzles included



TABLE OF CONTENTS

Introduction	1
Operation	2
Specifications	2
Important Safety Instructions	3-6
Parts List	7-8
Maintenance	9
Warranty / Service	10
Warranty Registration Form	11

INTRODUCTION

XPOWER B-24/B-25 are ETL/C-ETL certified professional level pet dryers. The XPOWER B-24 Thermal Ace Force Dryer gives you the power of heat to dry pets even faster! The variable speed control along with dual heat settings give you complete control over the amount of air and temperature you need to dry even the densest double coat. The XPOWER B-25 Pro Force Plus Double Motor Dryer provides maximum power to dry pets quickly while saving you time. Like all XPOWER dryers, the B-24 and B-25 are extremely lightweight and up to 40% quieter than other dryers in the market. Its rugged ABS housing makes it super durable and the filter system keeps debris out of the motor for maximum efficiency. The B-24 is compatible with our wall or stand mount kits for convenient storage and mobility.

Special Features:

- Powerful and Energy-Efficient
- Super Lightweight and Compact
- Remarkably QUIET Motor
- 2 Heat Settings For B-24
- 4HP Double motor For B-25
- 3 Washable Filter Sets
- 8 ft Flexible Heat Protected PU Hose
- Thermally Protected
- Variable Speed Control Switch
- Durable & Rugged ABS Housing
- 1 Year Limited Warranty
- 3 Nozzle Attachments (included)

Heat Settings



OPERATION

1. Place the dryer on a flat surface. Plug the electrical cord into a 3-prong outlet.
2. To operate, attach the desired nozzle and adjust the variable speed dial.
3. For B-24, to use heating element, choose desired heat setting (I or II).
4. To reduce the risk of injury, close supervision is necessary when the unit is used near children.
Do not allow children to play with or around the unit.

SPECIFICATIONS

Model	B-24	B-25
Volt / Cycle	115 V / 60 Hz	115 V / 60 Hz
Horse Power	3 HP	4 HP
Amp	12 A	12 A
Heat Settings	Dual	N.A.
Max Airflow	150 CFM	160 CFM
Speeds Control	Variable	Variable
Overheating Protection	Dual Thermal	Dual Thermal
Unit Weight	8.8 lbs	12.3 lbs
Unit Size	14 x 6.3 x 9.2 inch	17.7 x 6.3 x 9.3 inch
Cord (Length / Dia)	10 ft / 16 AWG	10 ft / 16 AWG
Hose (Length / Dia / Material)	8 ft / 1.7 inch / PU	8 ft / 1.7 inch / PU
Housing Material	ABS	ABS

SAFETY INSTRUCTIONS

WARNING: IMPORTANT SAFETY PRECAUTIONS!

When using electrical appliances, especially when children or animals are present, basic safety precautions should always be followed to reduce the risk of fire, electric shock, and personal injury, including, but not limited to the following:

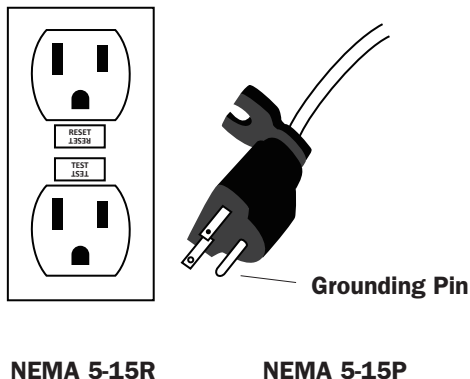
- DO NOT use attachments not intended for use with the dryer. Only use attachments recommended or sold by the manufacturer.
- DO NOT attempt to perform any service or maintenance not outlined in instruction manual.
- WARNING – To Reduce The Risk Of Electric Shock – Use Indoors Only. DO NOT use outdoors.
- WARNING: This Pet Dryer is not intended for use by children. Adult assembly and operation required. To reduce the risk of injury, close supervision is necessary when an appliance is used near children.
- DO NOT use as a toy.
- DO NOT leave appliance when plugged in. Unplug from outlet when not in use and before servicing.
- DO NOT use extension cords with dryer.
- DO NOT unplug unit by pulling on cord, to unplug, grasp the plug, not the cord.
- WARNING: Never use dryer with a damaged cord or plug, or after the appliance malfunctions or is dropped, damaged in any manner. Return to an Authorized Service Center for service, examination, repair, or electrical or mechanical adjustment.
- To disconnect, turn all controls to the off (“O”) position, then remove plug from outlet.

- DO NOT pull or carry by cord, use cord as a handle, close a door on cord, or pull cord around sharp edges or corners. DO NOT run appliance over cord. Keep cord away from heated surfaces.
- DO NOT handle plug or appliance with wet hands.
- Use extra care when cleaning on stairs.
- DANGER: DO NOT expose dryer to rain or water.
- DO NOT use or store dryer where it can fall or be pulled into tub or sink or standing water. If dryer falls into water unplug it, DO NOT reach into the water. Keep units out of baths and DO NOT operate on a wet floor, or wet surface.
- DO NOT use to pick up flammable or combustible liquids, such as gasoline, or use in areas where they may be present. DO NOT pick up anything that is burning or smoking, such as cigarettes, matches, or hot ashes.
- Unplug before connecting nozzles and hose.
- WARNING: DO NOT put any object into dryer openings. Keep loose clothing, jewelry and hair away from dryer openings. DO NOT use with any opening blocked; keep free of dust, lint, and anything that may reduce air flow.
- WARNING: DO NOT allow any material to clog or block air intakes as this may cause units to overheat and result in a fire or electrical hazard. Regularly clear hair or other substances from air intakes. DO NOT contact moving parts.
- Connect to a properly grounded outlet only. See Grounding Instructions.

Grounding Instructions

- This appliance must be grounded. In the event of malfunction or breakdown, grounding provides a path of least resistance for electric current to reduce the risk of electric shock. This appliance is equipped with a cord having an equipment-grounding conductor and a grounding plug. The plug must be plugged into an appropriate outlet that is properly installed and grounded in accordance with all local codes and ordinances.
- A qualified electrician should be consulted if there is any doubt as to whether an outlet box is properly grounded.
- DANGER – Improper connection of the equipment-grounding conductor can result in a risk of electric shock. The conductor with insulation having an outer surface that is green with or without yellow stripes is the equipment-grounding conductor. If repair or replacement of the cord or plug is necessary, do not connect the equipment-grounding conductor to a live terminal. Check with a qualified electrician or serviceman if the grounding instructions are not completely understood, or if in doubt as to whether the appliance is properly grounded. Do not modify the plug provided with the appliance – if it will not fit the outlet, have a proper outlet installed by a qualified electrician.

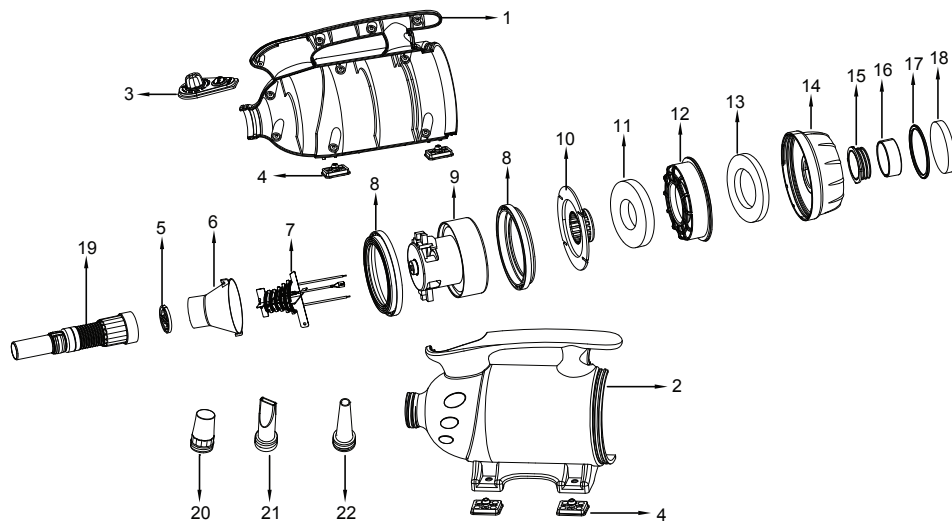
- This appliance is for use on a nominal 115V circuit (NEMA 5-15R), and has a grounding plug (NEMA 5-15P) as illustrated below. Make sure that the appliance is connected to an outlet having the same configuration as the plug. No adapter should be used with this appliance.



**SAVE THESE INSTRUCTIONS
HOUSEHOLD AND COMMERCIAL USE**

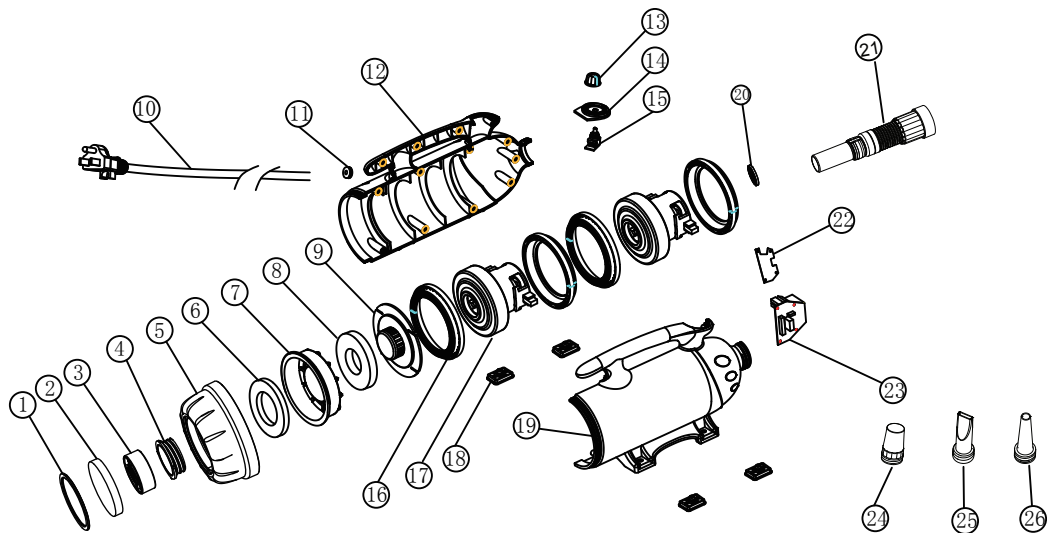
B-24 PARTS LIST

1	Left housing	9	Motor	17	Rear cover baffle
2	Right housing	10	Dustproof cover	18	Inlet filter
3	Switch	11	Motor filter	19	Hose
4	Rubber feet	12	Dust case	20	Round nozzle
5	Air outlet grid	13	Dust case filter	21	Flat nozzle
6	Heater element round cover	14	Rear cover	22	Cone nozzle
7	Heater element	15	Rear cover connector		
8	Motor rubber sleeve	16	Crossed cover		



B-25 PARTS LIST

1	Rear cover baffle	9	Dustproof cover	17	Motor	25	Flat nozzle
2	Inlet filter	10	Power cord	18	Rubber feet	26	Cone nozzle
3	Crossed cover	11	Cord bushing	19	Right housing		
4	Rear cover connector	12	Left housing	20	Air outlet grid		
5	Rear cover	13	Switch knob	21	Hose		
6	Dust case filter	14	Switch plate	22	PET film		
7	Dust case	15	PCB board assembly 1	23	PCB board assembly 2		
8	Motor filter	16	Motor rubber sleeve	24	Round nozzle		



MAINTENANCE

IMPORTANT!

Always turn off the unit and disconnect from electrical outlet before maintenance or cleaning.

Product Maintenance:

1. To keep the Pet Dryer clean, use a damp cloth to wipe the surface of the housing. Removable part(s) and filters may be cleaned with water and dried thoroughly before reassembling.
2. When not in use, unplug and store the Pet Dryer in a dry place indoors and keep out of reach of children.

Cleaning Dryer Dust Case, Rear Cover and Filters:

The Filter System for the XPOWER Pet Dryer (including dust case, rear cover and filters) should be kept clean regularly. If the dust case is full of hair and/or dirt or the filters become heavily coated, the air output of the Dryer will reduce and this may cause damage to the motors or cause the motors to overheat. You should never operate the dryer without filters in place.

XPOWER LIMITED WARRANTY

XPOWER Manufacture, Inc. warrants this product to be free from defects in material and workmanship for a period of one (1) year from the date of original purchase. Wearable parts including but without limitation, filters, motor brushes, hoses and power cords are excluded from the warranty. The liability of XPOWER is limited solely to the cost of the repair or replacement of parts/the unit at XPOWER's discretion. This warranty does not cover normal wear of parts and does not apply to any unit that has been tampered with or used for commercial purposes. This limited warranty does not cover damage caused by misuse, abuse, negligent handling or damage due to faulty packaging or mishandling in transit. This warranty does not cover damage or defects caused by or resulting from damages from shipping or repairs, service or alterations to the product or any of its parts, which have been performed by a repair person not authorized by XPOWER.

Limitations and Exclusions

If any part or device manufactured by XPOWER Manufacture, Inc. is repaired or replaced, the new/repaired machine and/or part(s) shall be warrantied only for the remainder of the original warranty period.

SERVICE

For Warranty service and parts replacement (US user only), you must:

- A. Call 1-626-285-3301 for a RMA (Return-Merchandise-Authorization) number.
- B. Have original proof of purchase.
- C. Use the original undamaged packaging or an Industrial certified packaging method.

The end user will be responsible to ship back the unit (with RMA Number showing on the shipping label) to the XPOWER Service Department. XPOWER to inspect, assess and advise the repairs needed and the applicable cost, if any.

For users outside the US, please contact XPOWER Distributor in your country or region for Warranty service and parts replacement.

Warranty Registration (for US user only)

For your product warranty, please complete and mail / fax this form to **XPOWER MANUFACTURE, INC.**

Address: 240 Clary Ave., San Gabriel, CA 91776.

Tel: 626-285-3301

Fax: 626-285-3302

(For your convenience, register your product online at xpower.com)

Your Name / Company Name _____

Contact Name _____ Title _____

Address _____ City _____ State _____ Zip _____

Phone _____ Fax _____ E-mail _____

Forced Air Dryer Model # _____ Serial # : _____

Date of Purchase ____/____/____ Purchased From _____



From: _____



TO:
XPOWER MANUFACTURE, INC.
240 Clary Avenue
San Gabriel, CA 91776, USA
Tel: 626-285-3301, Fax: 626-285-3302

