



RESTORATION

WATER FIRE MOLD

Dehumidifiers - Air Scrubbers - Air Movers

Pressurized Wall Cavity Dryers - Foggers - Ozone Generators

Maximize Capacity | Maximize Productivity | Maximize Profitability



Who We Are

XPOWER Manufacture Inc. brings over 25 years of experience developing an expanding series of professional and consumer products with the most advanced technology in today's market. By creating a fully integrated design with state-of-the art miniaturization, XPOWER's innovative products are lightweight, quiet, rugged and affordable – without sacrificing power or durability.

In partnership with its distributor network, XPOWER and its R&D engineers welcome new ideas and creative thinking to develop quality products for a profitable and long term relationship. XPOWER capitalizes on its global presence in its pursuit of enthusiastic and ambitious product distributors.

Precision Manufacturing

XPOWER is continuously identifying and investing in advanced manufacturing technologies, including CNC injection molding equipment and a robust R&D team. Our highly trained engineering department is an active participant in the creation of fully integrated motor, housing, and fan designs.

The result – finished products that create and enhance opportunities while also conforming to the highest standards of efficiency, balance, and reliability.

Global Organization

XPOWER seeks to provide maximum value with a combination of superior product quality and service. A worldwide presence created manufacturing for both 115V and 230V equipment for global distribution. US, direct import and OEM private label container orders enjoy prompt fulfillment from extensive inventory, thanks to world-class factory production capacity.

For product or parts assistance, XPOWER's customer service team offers comprehensive support for distributors and end users, assuring a first-class customer experience.





Standards & Safety

XPOWER ensures product safety controls and maintains the highest production standards in the industry, with thermally protected motors that have globally recognized safety certifications.

Our world-class factory meets the rigorous standards required by big box retailers – ensuring consistent product quality standards and ethical working conditions are maintained.

To assure you of our commitment to quality, all XPOWER products have a 1 year limited manufacturer's warranty.

Table of Contents

pg 4 - 7	RESTORATION CERTIFICATION COURSES & TRAINING CENTERS
	Reets Drying Academy
	
	Ritcon Training and Consulting
	
	Restoration Academy LLC
	
	The Academy of Textiles and Flooring
	
pg 8-9	DEHUMIDIFIERS
	XD-125 XD-90L XD-130Li
pg 10 - 13	PRESSURIZED WALL CAVITY DRYERS
	PDS-Pro PDS-21 PDS-12
pg 14 - 15	CENTRIFUGAL AIR MOVERS
	P-230AT X-400A X-600A
pg 16 - 17	LOW PROFILE AIR MOVERS
	P-56A PL-700A PL-650A
pg 18 - 19	PROFESSIONAL AXIAL FANS
	P-21AR P-26AR X-39AR X-47ATR
pg 20	HIGH TEMP AXIAL FANS
	X-35AR X-48ATR
pg 21	CONFINED SPACE FANS
	X-8 X-12
pg 22 - 23	OZONE GENERATOR FANS
	M-25
pg 24 - 29	COMMERICAL AIR SCRUBBERS
	X-2480A X-2580 X-3400A X-3580 X-4700AM AP-2000 AP-1500D AP-1800D AP-2500D
pg 30 - 31	ULV COLD FOGGERS
	F-8 F-16 F-16B F-18B

REETS DRYING ACADEMY



Jeremy Reets

Our sole purpose here at Reets Drying Academy is education. We are invested in your success as a business and as part of that we offer additional support that extends past your visit with us.

Our teachers have in the field experience and have owned their own restoration companies. They will be able to relate to you in all aspects or trials you may face daily. Helping you with those problems you may be facing and getting you all ready to tackle those hard jobs with new found confidence and knowledge.

Whether its our in house IICRC classes or our online training, we are confident you will walk away filling your tool belt with all of the necessary tools for success.

We look forward to talking with all of you soon!

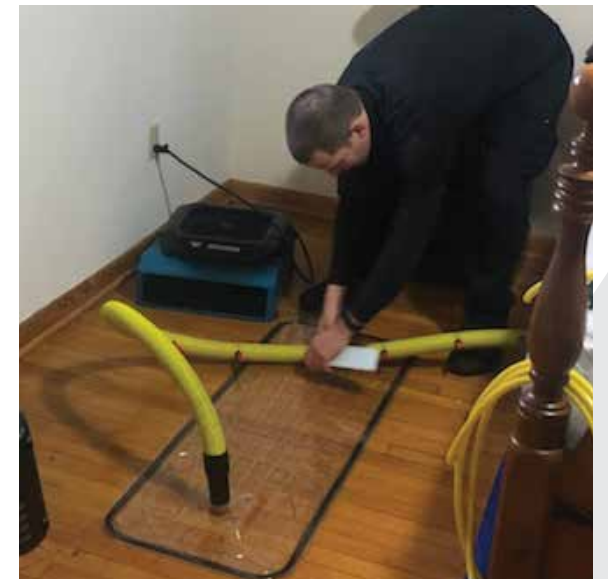
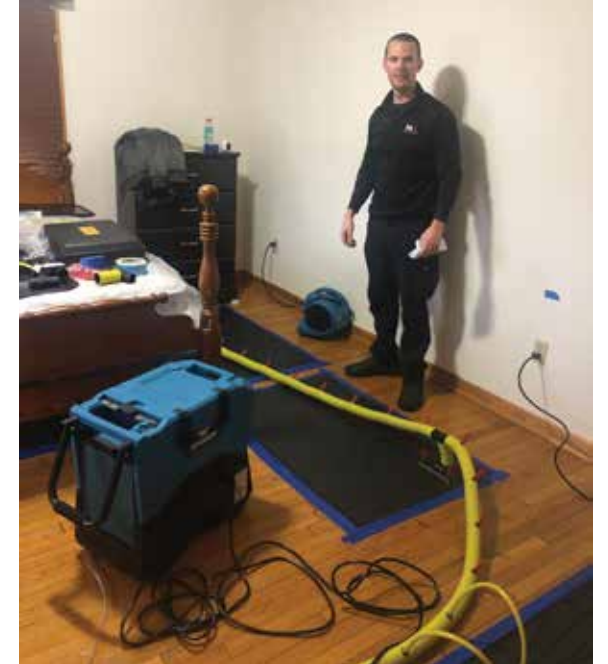


RITCON DISASTER TRAINING & CONSULTING



Ken Sellers

RITcon Training is dedicated to the advancement of knowledge in the property damage restoration industry. We offer many classes which include IICRC and IOTC certifications, continuing education, insurance CEC credits, custom hands on training and private training at your facility as well as classes at our Winchester, VA Training center. The training center was built to offer the MOST comprehensive hands on training in the country. RITcon Disaster Services was formed with over 25 years of industry experience by Ken Sellers. RITcon provides a variety of property damage restoration, mitigation, remediation and estimating services. Our consulting and project management associates have over 100 years of cumulative industry experience ranging from large loss water mitigation, fire damage restoration, mold remediation, document review and expert witness services. Additionally, our project management team can manage both small and large construction rebuilds as well as estimate review and budgeting.



RESTORATION ACADEMY LLC



Bryan Brainerd -IICRC WRT, ASD, WRT/ASD

Bryan Brainerd has been in the Restoration industry for over 25+ years and a IICRC approved instructor since 2000. He has been teaching for 19+ years in courses such as, Water Restoration Technician (WRT), Fire Smoke Restoration Technician (FSRT), Applied Structural Drying Course (ASD), and the WRT/ASD Combo Course. Bryan Brainerd is an esteemed committee member on the IICRC, FSRT, ASD, WRT, and TAC committee.

Restoration Academy LLC was founded in 2012 by Bryan Brainerd. Bryan has been involved in restoration since 1994 and instructing since 2000. Prior to starting Restoration Academy, Bryan worked for Paul Davis (Franchisor) as the Director of Emergency Services, overseeing training and operation compliance with the network of franchises. Prior to Paul Davis, Bryan worked with ServPro of North Indianapolis as well as their Director/Trainership, consulting on a wide variety of restoration jobs. Bryan has developed training programs for employees, managers and owners of several restoration firms.



Bryan Brainerd



Restoration Academy Flood House



Restoration Academy Training Flood House



Centrifugal



PDS-12



PDS-21



Axial Fan



LGR Dehumidifier



Low Profile

THE ACADEMY OF TEXTILES AND FLOORING



Nate Seward

Our Primary Training Courses maintain a comfortable and innovative learning opportunity that educates students of proper industry standards. With multiple training platforms, including interactive online courses and a flood house, students will benefit from a more "hands on experience". Our warehouse and testing center is equipped with training modules that simulate residential and commercial settings to help provide the best real life situations possible.

We have numerous types of equipment for you to "play" with from the world's leading manufacturers in drying and restoration equipment. ATF does not endorse any manufacturer or brand, our mission is to provide our students with science-based technology facts, completely unbiased so that the student can make their own decision on what works best.



The Academy Of Textiles And Flooring



The Academy Of Textiles And Flooring



Wood Floor



PDS-21



90° Drying



Ceiling Dry



Axial Action



LGR Dehumidifier

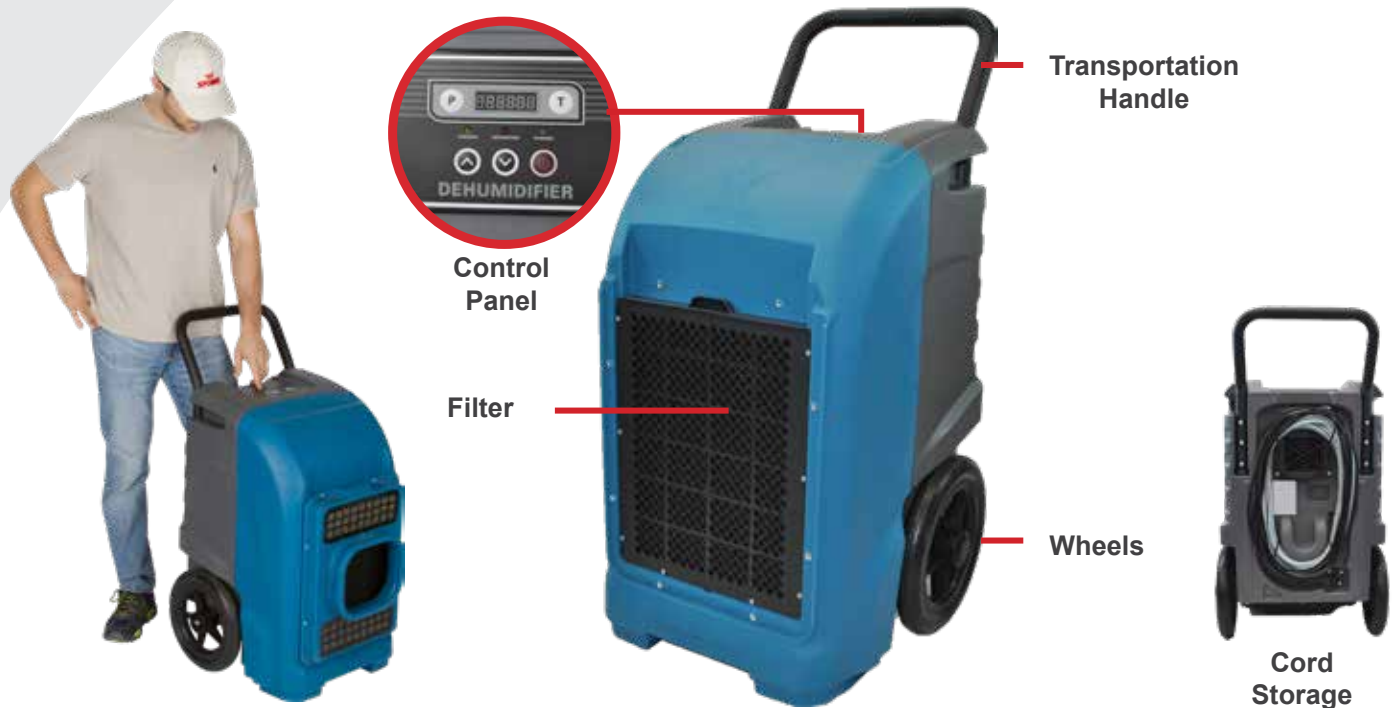


XD-125
76 PPD @AHAM

The XPOWER XD-125 Commercial Dehumidifier is designed to maximize water extraction while combining the highest efficiency in performance and portability. A rugged and compact design allows for easy storage, while the durable housing construction withstands rough handling. Semi-pneumatic wheels make transport and maneuver on job sites a snap. The XD-125's unique operating features make it the perfect machine for not only water damage restoration jobs, but also for a multitude of commercial and industrial applications where humidity control is required.

- XD-125 Operating Features -----
- 76 pints/day @ AHAM (80° F, 60% RH)
 - Space Saving Compact Design
 - Pneumatic Wheels Maximize Transporting
 - Rugged Handle Increases Maneuverability

Xactimate Code: WTRDHM> (L)



Model	Water Removal @AHAM	Water Removal @ Full Saturation	Operating Range	Amperage	Airflow	Weight
XD-125	76 Pints Per Day	125 Pints Per Day	33° F - 100° F	7.3 Amps	235 CFM	81 Lbs.

XD-90L
85 PPD @AHAM

The XPOWER XD-90L Large capacity compact LGR Dehumidifier is the latest in Advanced Humidity Control Technology. With a patented High Efficiency Dual Intake System, the XD-90L has become the highest output Low Grain Refrigerant (R32) Dehumidifier in its class.

Boasting 85 PPD @ AHAM (80°F / 60% RH), this LGR Dehumidifier draws 5.8 amps and includes all the features you have come to expect from a professional grade manufacturer. A digital display, smart controls, integrated handles, and self-purging water pump makes this 71.2 LB 200 CFM powerhouse the dehumidifier of choice.

Xactimate Code: WTRDHM>L



Stainless Steel Filter

Next Generation of LGR Dehumidifier Filters are now available! A Washable Stainless-Steel filter maximizes the performance of the XD-90L with added protection against foreign matter that may cause damage passing through the intake.

XD-130Li
125 PPD @AHAM

The XPOWER XD-130Li Low Grain Refrigerant (LGR) Dehumidifier is designed to maximize water extraction while combining the highest efficiency in performance and portability. A rugged and compact design allows for easy storage, while the durable housing construction withstands rough handling. Semi-pneumatic wheels make transport and maneuver on job sites a snap. The XD-130Li's unique operating features make it the perfect machine for not only water damage restoration jobs, but also for a multitude of commercial and industrial applications where humidity control is required.

- 125 pints/day @ AHAM (80° F, 60% RH)
- Space Saving Compact Design
- Pneumatic Wheels Maximize Transporting
- Rugged Handle Increases Maneuverability

Xactimate WTRDHM>XL

Model	Water Removal @AHAM	Water Removal @ Full Saturation	Operating Range	Amperage	Airflow	Weight
XD-90L	85 Pints Per Day	150 Pints Per Day	33° F - 105° F	5.8 Amps	200 CFM	71.2 Lbs.
XD-130Li	125 Pints Per Day	220 Pints Per Day	33° F - 105° F	8.5 Amps	420 CFM	90.4 Lbs.



PDS-Pro

The VIKING PDS-Pro System by XPOWER is the next-generation wall cavity dryer, featuring a digital screen with independent heat and airflow controls. It offers variable heat via a built-in heater, high CFM airflow from a brushless motor (10.5 amps), and digital speed control—all with 5,000+ hours of maintenance-free use. The included Wall Drying Kit (PDS-WDK) comes with hoses, connectors, and nozzles for versatile setups. Lightweight and quiet, the PDS-Pro dries under sinks, behind cabinets, and more, with fast setup and tear down. COME DRY WITH US!

Xactimate Code: WTRWALL
(Wall Cavity Drying - Inj. Type)



- Pressurized heated airflow for optimal wall cavity drying
 - PDS-Pro rated at 10.5 Amps with brushless motors
 - No more brush changes and long motor life rated at 5,000+Hrs
 - Kit includes wall drying kit (PDS-WDK)
 - Wall Drying Kit includes: (1) 3-Way Main Nozzle connector, (4) 6' Main Hose kits, 100ft yellow injector tubing, (50) wall injector nozzles, (6) end caps, (5) main hose connectors, and (8) main hose cuffs
- Digital display screen with optimized speed and heat settings
 - Variable speed control for continued drying on occupied dries
 - Variable heat controller with built-in heater element for advance heating control options
 - Quick release nozzles improve efficiency by making setup and takedown easy



- 1

3-Way Main Nozzle connector
- 2

100ft Yellow injector Tubing
- 3

6' Main Hose Kits
- 4

50 Wall Injector nozzles
- 5

6 End Caps
- 6

5 main hose connectors
- 7

8 main hose cuffs

Model	HP / Watts	Airflow	Speed	Amperage	Weight
PDS-21	1200 W	92 CFM	1 Speed	9 Amps	19 Lbs.
PDS-12	4 HP	160 CFM	Variable Speed	12 Amps	12.3 Lbs.
PDS-Pro	4 HP	150 CFM	Variable Speed	10.5 Amps	11 Lbs.

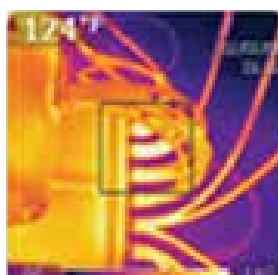


PDS-21

Heat to 205°F. There is no air mover motor, no squirrel cage, and no attachments. The PDS-21 is an all-in-one containment which makes this revolutionary product easy-to-use for big and small jobs alike. The PDS-21 makes drying easier and less frustrating than before. It is perfect for under sinks or behind cabinets and permanent furniture. Its portability makes drying a breeze.

- Pressurized air flow
- Most even airflow
- Built-in cord wrap
- Light Weight
- Easy grip handle
- On-board plug-off system
- Self healing thermal protection
- Stackable for storage

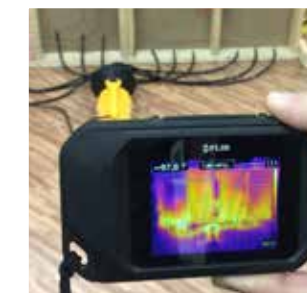
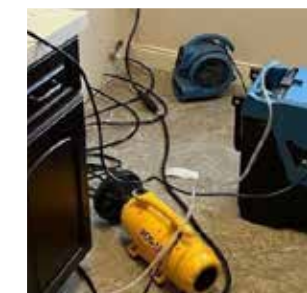
Xactimate Code: WTRWALL (Wall Cavity Drying - Inj. Type)



PDS-12

Introducing the next generation of compact equipment made available by **XPOWER**. The **PDS-12** is a lightweight wall cavity dryer that quietly delivers **heated air** for drying under sinks, behind cabinets, and permanent furniture. Equipped with a **variable speed switch**, Professional Restorers now have complete control of the airflow for any drying application.

Xactimate Code: WTRWALL (Wall Cavity Drying - Inj. Type)





P-230AT
AIR MOVER

925 CFM, 2.3 AMP

This lightweight 3-speed power house draws only 2.3 amps and produces 925 CFM to dry those hard-to-reach places. The 2 built-in daisy chain power outlets makes this 10.2 Lbs. champ a must-have fan for any restorer.

Xactimate Code: WTRDRY



X-400A
AIR MOVER

1600 CFM, 3.0 AMP

This is the staple XPOWER Restoration Fan. This high output 3-speed air mover produces 1600 CFM. Built-in daisy chain power outlets integrated with the signature XPOWER lightweight high performance design makes this compact 17.2 Lbs. air mover a vital addition to your arsenal of Professional Restoration equipment.

Xactimate Code: WTRDRY

Model	HP / Watts	Amperage	Airflow	Speed	Weight
P-230AT	1/4 HP	2.3 Amps	925 CFM	3 Speed	10.2 Lbs.
X-400A	1/4 HP	3 Amps	1600 CFM	3 Speed	17.2 Lbs.



X-600A
AIR MOVER

2,400 CFM, 3.8 AMP

This Professionals Choice weighs in at less than 22 Lbs., making the X-600A the lightest, most compact air mover in its class. Drawing only 3.8 amps, restorers can confidently daisy chain this 2400 CFM workhorse using the on-board GFCI outlets.

- Powerful & energy efficient 1/3 HP induction motor
- 25 ft. power cord with wrap-around cord design
- Built-in GFCI power outlets for daisy chain
- Stackable up to 4 units high for easy storage
- Lightweight, compact and durable ABS plastic housing design

Xactimate Code: WTRDRY



Features



Stackable



Daisy Chain



Operating Positions

Model	HP / Watts	Amperage	Airflow	Speed	Weight
X-600A	1/3 HP	3.8 Amps	2400 CFM	3 Speed	21.5 Lbs.



PL-700A
1050 CFM, 2.8 AMP

The XPOWER PL-700A is a compact 3-speed 1050 CFM low profile air mover. Designed and constructed from durable polypropylene, this 1/3 HP motor draws 2.8 amps and can be daisy chained utilizing the 2 built-in power outlets. A large intake and strategically placed vents on the underside will generate the airflow needed to effectively dry floors. This air mover can be stacked upwards to 6 units with its deep nested design.

Xactimate Code: WTRDRY



Features



2 Operating Positions



Daisy Chain



3 Speed

Daisy Chain (up to 4 units)



PL-650A
1150 CFM, 2.8 AMP

Designed with the restorer in mind, the 5-speed XPOWER XL-730A Low Profile Air Mover features a 1/3 HP sealed induction motor that produces 1150 CFM and draws only 2.8 amps in the high setting. Daisy chain capability made possible with the 2 on-board GFCI outlets. The rugged ABS housing with deep nest design allows for secure stacking upwards to 6 units high for easy storage.

Xactimate Code: WTRDRY



P-56A
1300 CFM, 1.0 AMP

The P-56A is a compact axial air mover ideal for floor, carpet, and upholstery drying. With multiple setup positions (stand-up, downdraft, updraft, angled), pop-out legs, and PVC rod slots for custom angles, it delivers 1,300 CFM using just 0.9 Amps. Lightweight, stackable (up to 6 units), and featuring daisy-chain power outlets and a 15 ft. LED plug cord, it's perfect for drying, ventilation, and restoration.



Model	HP / Watts	Amperage	Airflow	Speed	Weight
PL-700A	1/3 HP	2.8 Amps	1050 CFM	3 Speed	19.8 Lbs.
P-650A	60 W	0.9 Amps	1300 CFM	Variable Speed	22.9 Lbs.
P-56A	60 W	0.9 Amps	1,300 CFM	Variable Speed	10.4 Lbs.



P-21AR

1100 CFM, 0.6 AMP

The P-21AR offers the capability and versatility of drying spaces that have limited accessibility. The barrel-like POD housing mounted on a 360° tilt adjustable stand provides a steady 1100 CFM of directional airflow to efficiently target those areas affected by damaging moisture. This lightweight, stackable 4-speed micro mini axial draws a mere 0.6 amps and can be daisy chained to multiple units with the built-in power outlets.



P-26AR

1300 CFM, 1.0 AMP

The P-26AR Restoration Suppressor is a lightweight 4-speed micro mini axial that will help you overtake any water damage situation. This 1.0 amp fan fires 1300 CFM and can be daisy chained with the integrated power outlets. The barrel-like housing with advanced air fin technology mounted on a 360° tilt adjustable stand will help you quietly target those problematic flood zones.



X-39AR

2100 CFM, 1.6 AMP

The XPOWER X-39AR axial fan is a powerhouse that offers maximum CFM output while efficiently drawing less than 2 Amps at its highest speed. A specially designed fan grille excels in extending a powerful and focused straight stream of air up to 60 ft.

Xactimate Code: WTRDRY+

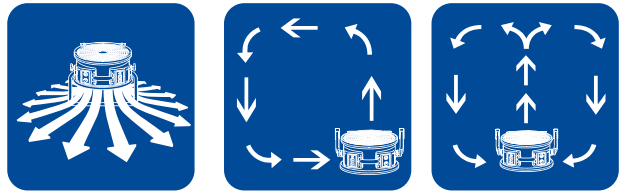


X-47ATR

3600 CFM, 2.8 AMP

The X-47ATR is easily the most compact and versatile axial fan on the market today. Weighing less than 23 Lbs., this 3600 CFM beast draws 2.8 amps and can be safely daisy chained with the 2 on-board power outlets. Every unit comes fully assembled with a removable 360° tilt adjustable stand. A high torque sealed motor paired with an advanced air fin technology ensures continuous directional airflow upwards to 60 feet.

Xactimate Code: WTRDRY+



360° Rotation



Stackable



Daisy Chain
(up to 4 units)

Model	HP / Watts	Amperage	Airflow	Speed	Weight
P-21AR	69 W	0.6 Amps	1100 CFM	4 Speed	10.4 Lbs.
P-26AR	115 W	1 Amps	1300 CFM	4 Speed	11.7 Lbs.
X-39AR	1/4 HP	1.6 Amps	2100 CFM	Variable Speed	16.5 Lbs.
X-47ATR	1/3 HP	2.8 Amps	3600 CFM	Variable Speed	22.2 Lbs.



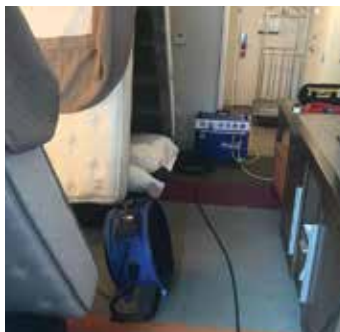
X-35AR / X-48ATR

1720 - 3600 CFM, 1.6 - 2.8 AMP

The XPOWER line of heat resistant fans are capable of operating in room temperatures up to 180 degrees Fahrenheit and can be used in conjunction with heaters to circulate hot air. Ideal for pest control and water damage restoration applications, these units feature variable speed control, low amp draw, a 3 hour timer, 360-degree rotation stand, and built in power outlets to daisy chain. The unique housing design provides a powerful and extended focused stream of air upwards to 95 ft. XPOWER Hi-Temp fans are equipped with sealed motors to protect it from contaminants in harsh conditions. The super lightweight design allows for easy transport and can be stacked up to 5 units high.

XPOWER Hi-Temp Operating Features

- Designed for heated work environments upwards to 180°F / 80°C
- Ideal for pest control and restoration applications using heat
- SEALED Motor provides protection in adverse conditions
- Low Amp Draw with 1720-3600 CFM Max. Airflow Capacity



360 Degree Rotation



Stackable



Daisy Chain

HI-TEMP RESISTANT

180°F

SEALED MOTOR
To Resist Corrosion

3-HOUR TIMER
Set & Forget



X-8 / X-12

1200 - 2600 CFM, 2.5 - 6.0 AMP

Already an industry favorite, the XPOWER line of compact, variable speed confined space ventilators will provide complete airflow control to where it is lacking the most. Whether introducing or drawing air with the different ducting options, these powerful, low amp units with sealed motors will create the necessary air movement to get the job done.

Xactimate Code: WTRDRY+

DUAL SIDED DUCTABLE RINGS



Pull air in or Push air out



ACCESSORIES



8DH25

X-8 8 Inch Duct Hose (25 Ft)



12DH25

X-12 12 Inch Duct Hose (25 Ft)

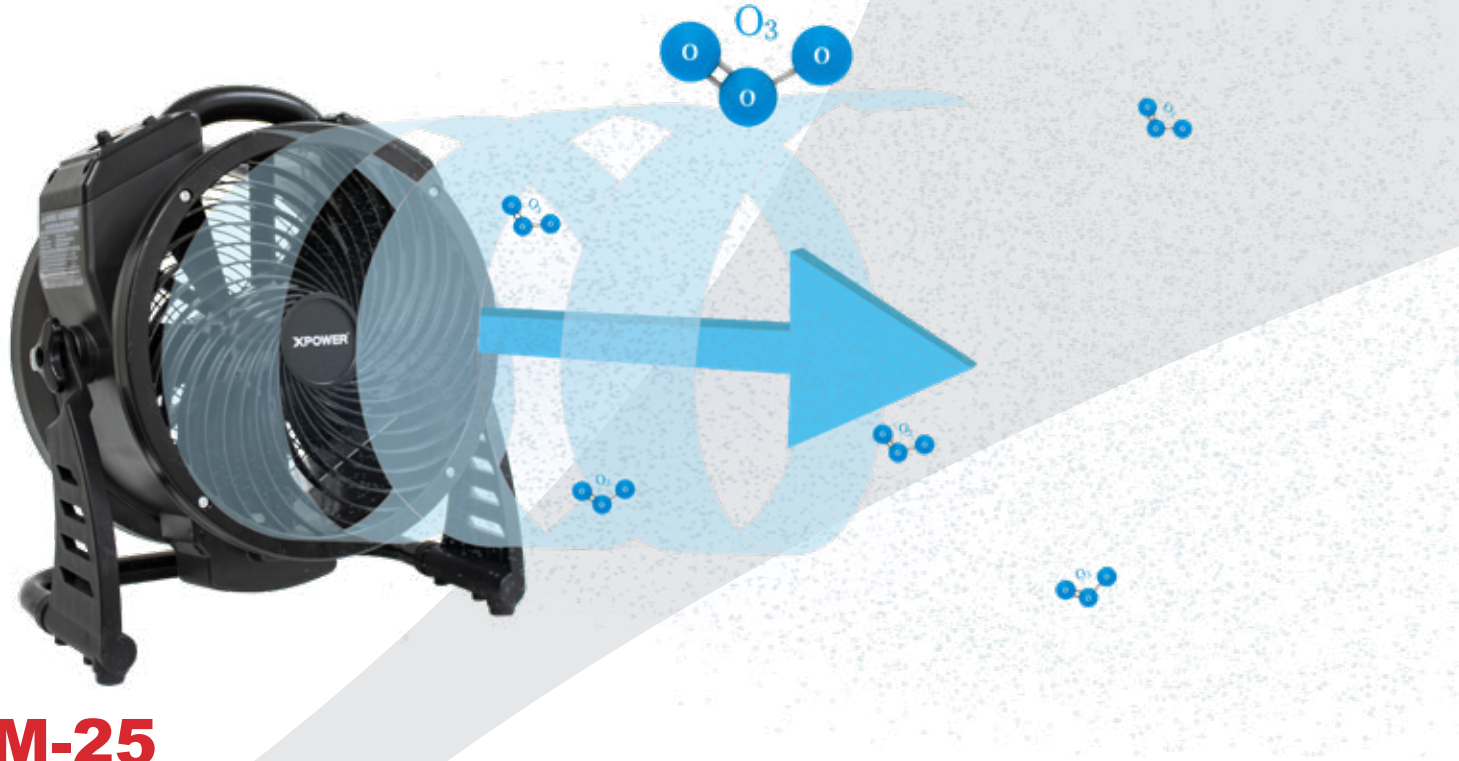
8DHC25

X-8 Duct Hose Carrier with 25 Ft Duct Hose



Model	HP / Watts	Amperage	Airflow	Speed	Weight
X-35AR	1/4 HP	1.6 Amps	1720 CFM	Variable Speed	17.6 Lbs.
X-48ATR	1/3 HP	2.8 Amps	3600 CFM	Variable Speed	25.6 Lbs.

Model	HP / Watts	Amperage	Airflow	Speed	Weight
X-8	1/3 HP	2.5 Amps	1200 CFM	Variable Speed	13.5 Lbs.
X-12	1/2 HP	6 Amps	2600 CFM	Variable Speed	23.4 Lbs.



M-25
1450 CFM, 1.2 AMP

XPOWER's Axial Air Mover with built-in commercial ozone generator features a 5,000mg/hour ozone generator (M-25/M-25B model) & a 10,000mg/hour ozone generator (M-27 model). A brushless DC motor offers ultimate energy efficiency and powerful extended airflow with penetrating ozone coverage. The M-25B takes ozone treatment to another level of versatility and convenience with its cordless battery operated feature. The M-25/B & M-27 is perfect for sanitizing and deodorizing medium to large areas such as hotel suites, homes, offices, basements, and more. It will eliminate the most severe odors caused by mold, mildew, tobacco, fire and smoke, water and flood damage, animals, and more.



XPOWER's air movement technology leads the industry in performance and versatility for your needs. Brushless DC motors produce large amounts of torque to propel huge volumes of air for whole room circulation and more thorough ozone application. An advanced housing design paired with a deep pitch fan blade creates a focused and extended pattern of airflow. All these features coupled with an industrial grade ozone generator and you have the ultimate axial fan with ozone generator that aides in applying ozone in small, medium, and large spaces. A variable speed control allows for dialing in precise volumes of air movement and a 360-degree stand is included for directing air & ozone where it's needed most.

Featuring an Always-On setting, a 3-hour Set-N-Forget timer, a separate on/off toggle switch for the ozone generator, and an ozone indicator light for safety. With the ability to turn the ozone generator off independently, you can utilize this unit as a standard air mover for cooling, ventilating, and drying purposes. Dual purpose air mover/ozone generator, this is truly unique to the market.



- Industrial Ozone Generator
- Ozone Indicator Light
- On/Off Switch & 3Hr Timer

Wrap Around Cord Design



Variable Speed Control

High Torque Motor + Deep Pitch Fan Blade for Maximum Extended Airflow



Brushless DC Motor Maximum Energy Efficiency



Ozone Plate



Fully Installed Rack Stand Allowing 360° Angle Rotation



Stackable (Up to 5 units)



Model	HP / Watts	Amperage	Airflow	Speed	Weight
M-25	115 W	1.2 Amps	1450 CFM	Variable Speed	12.8 Lbs.



X-2580

550 CFM, 2.8 AMP

The XPOWER X-2580 Mini HEPA Air Scrubber with Charcoal Filter is a compact high performance air purifier ideal for fire/smoke and odor remediation. This 550 CFM 4-Stage Air Scrubber draws 2.8 amps and can be used for creating Negative Air Pressure. The lightweight stackable ABS housing includes an activated charcoal filter capable of removing airborne volatile organic compounds (VOC), food odors, smoke, fumes from paint & thinners, and other malodors. Each unit features a filter change light that illuminates when filters require attention.

Xactimate Code: WTRNAFAN



Charcoal Filter

REPLACEMENT FILTERS

	X-2480A	X-2580	X-3400A	X-3580
WASHABLE OUTER NYLON MESH FILTER	-	NFR9 (9 in.)	-	NFR12 (12 in.)
WASHABLE NYLON MESH FILTER	NFS13 (13x13 in.)	NFS13 (13x13 in.)	NFS16 (16x16 in.)	NFS16 (16x16 in.)
ACTIVE CARBON FILTER	-	CF15 (13x13 in.)	-	CF35 (16x16 in.)
PLEATED MEDIA FILTER	PF13 (13x13 in.)	-	PF16 (16x16 in.)	-
HEPA FILTER	HEPA35-33 1.4 in. Thick (13x13 in.)	HEPA35-33 1.4 in. Thick (13x13 in.)	HEPA50 2 in. Thick (16x16 in.)	HEPA35 1.4 in. Thick (16x16 in.)

Model	HP / Watts	Amperage	Airflow	Speed	Weight
X-2480	1/2 HP	2.8 Amps	550 CFM	5 Speed	23.6 Lbs.
X-2580	1/2 HP	2.8 Amps	550 CFM	5 Speed	23.6 Lbs.

X-2480A

550 CFM, 2.8 AMP

Less space, increased profitability. The lightweight XPOWER X-2480A Mini HEPA Air Scrubber / Negative Air Machine is a high performance air purifier in a compact design. This 550 CFM 3-Stage Air Scrubber draws 2.8 amps and includes a foam cover for the intake to prevent contamination. The lightweight stackable ABS housing includes 2 on-board power outlets for daisy chain capability and an indicator light that illuminates when filters require attention.

Xactimate Code: WTRNAFAN



X-3400A

600 CFM, 2.8 AMP

Developed to restore indoor air quality in a variety of applications, the XPOWER X-3400A HEPA Air Scrubber / Negative Air Machine efficiently produces 600 CFM to effectively capture bacteria, allergens, mold, and sub-micron sized dust contaminants while only drawing 2.8 amps. The variable speed switch and filter change indicator light provides complete operating control. A durable ABS housing with on-board GFCI power outlets ensures that this stackable 28 Lbs. machine can be transported with ease.

Xactimate Code: WTRNAFAN



Nylon Mesh Washable Filter
Easily cleaned and washable for long term use. This durable pre-filter prolongs the life of subsequent filter stages.

Charcoal Filter

X-3580

600 CFM, 2.8 AMP

Developed to restore indoor air quality in spaces affected by smoke and odors, the XPOWER X-3580 HEPA Air Scrubber with Charcoal Filter produces 600 CFM to effectively remove airborne volatile organic compounds (VOC), odors, smoke, fumes, while capturing bacteria, allergens, mold, and sub-micron sized contaminants while only drawing 2.8 amps. The X-3580 features a filter change indicator light that notifies when filters require attention. The units weighs under 33 lbs and is stackable for easy transport or storage.

Xactimate Code: WTRNAFAN



Model	HP / Watts	Amperage	Airflow	Speed	Weight
X-3400A	1/2 HP	2.8 Amps	600 CFM	Variable Speed	28.8 Lbs.
X-3580	1/2 HP	2.8 Amps	600 CFM	5 Speed	32.8 Lbs.



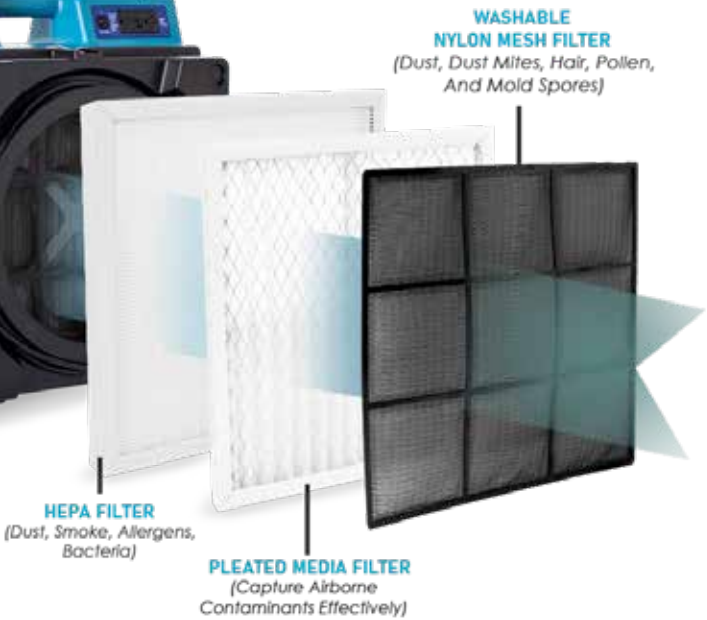
X-4700AM
750 CFM, 4.5 AMP

The XPOWER X-4700AM 3 Stage HEPA Air Scrubber is a commercial air purification system that produces a maximum 750 CFM while drawing 4.5 Amps. Designed to restore indoor air quality in a variety of applications, the variable speed X-4700AM will utilize 3 stages of filtration to effectively remove airborne pollutants as small as 0.3 microns with a 99.97% efficiency rating. This unit features: an optional hour meter (X-4700AM), a variable speed control, 2 on-board GFCI power receptacles, a foam intake cap, a lightweight durable nested stacking design.




- Built-in GFCI power outlets for daisy chain
- Low 4.5 Amp draw with 750 CFM max. airflow capacity
- Filter change light indicator
- An integrated hour meter monitors billable time (X-4700AM)
- ETL/CETL safety certified



Stackable
(Up to 4 units)



X-4700AM

	WASHABLE NYLON MESH FILTER	NFS16 (16x16 in.)
	PLEATED MEDIA FILTER	PF16 (16x16 in.)
	HEPA FILTER	HEPA50 2 in. Thick (16x16 in.)

AP-2000
2000 CFM, 8.5 AMP

The XPOWER AP-2000 Portable HEPA Air Filtration System provides high volume air exchanges required in abatement, dust control, and air scrubbing on large job sites contaminated by airborne pollutants. While drawing ONLY 8.5 AMPS, this lightweight Portable HEPA Air Scrubber produces an incredible 2000 CFM of air movement to efficiently remediate large spaces such as: hospitals, schools, arenas, gyms, conference halls, hotels, and any other largely occupied areas.

Moving the AP-2000 is made easy as it includes a 4 caster system (assembly required). The 2 stationary and 2 swivelling casters allow for easy horizontal maneuverability through any standard doorway. The durable polyethylene roto-molded housing features 4 integrated carrying handles, a strap tie down point, with nested stacking that secures the casters during the transport of multiple stacked units.



NEW FILTERS







* HEPA FILTER
HEPA-300S-WB



PLEATED MEDIA FILTER
PF22

* Replaces the HEPA-300-WB
for even greater filtration rate

Filter	Name	SKUsv
	Pre-Filter 24 x 24 in.	NF24
	Pre-Filter with Frame 23 x 23 in.	NF24RP
	Activated Carbon Filter 24 x 24 in.	CF-50-595
	12" Thick HEPA 24 x 24 in.	HEPA300-WB



12" Exhaust Collar



Model	HP / Watts	Amperage	Airflow	Speed	Weight
X-4700AM	2/3 HP	4.5 Amps	750 CFM	Variable Speed	33.1 Lbs.
AP-2000	1050 W	8.5 Amps	2000 CFM	2 Speed	112.4 Lbs.



AP Series

1800 CFM, 8 AMP

The NEW XPOWER AP Line of Brushless DC Motor Upright Large Volume HEPA Air Filtration Systems with PM2.5 Sensors are AVAILABLE NOW! This new series of air scrubbers provides all the power needed for improving indoor air quality on large jobs, with the versatility of providing airflow in the lowest levels for all day ultra-quiet operation in settings like classrooms, business, and in occupied facilities where operating noise levels are important. All of this is accomplished through our revolutionary DC Brushless Motor, where power meets precision. While drawing only a MAXIMUM 1.5-8.0 Amps (unit specific), and rated at 700-1800 CFM, the XPOWER Upright AP

Line of HEPA Air Filtration Systems will provide the capability and ultimate versatility in high-volume air exchanges while featuring precise variable speed control. A new feature built-in the AP Line is our digital PM2.5 indoor air quality sensor. Color coded in green/orange/red with a digital readout to monitor your indoor air quality.

The AP Line of Brushless Upright HEPA Air Scrubbers are ideal in addressing indoor air quality issues in educational institutions, hospitality, manufacturing, places of business, residential, retail, warehousing, & other mid-sized to large indoor spaces.

NOTE The AP-1500D & AP-1800D are standard 4-Stage Filtration units equipped with Activated Carbon Filters. The AP-2500D is a standard 3-Stage Filtration System with an optional upgrade to include an Activated Carbon Filter.



12" Exhaust Collar

Model	HP / Watts	Amperage	Airflow	Speed	Weight
AP-1500D	170 W	1.5 Amps	700 CFM	Variable	45.9 Lbs.
AP-1800D	400 W	3.5 Amps	1100 CFM	Variable	65.7 Lbs.
AP-2500D	840 W	8.0 Amps	1800 CFM	Variable	95.1 Lbs.

Filter Breakdown

AP-1500D

NFS16	16 x 16 in. Washable Nylon Mesh Filter
PF-16	16 x 16 in. Pleated Media Filter
CF35	16 x 16 x 1.4 in. Thick Activated Carbon Filter
HEPA-300-406PV ...	16 x 16 x 11.5 in. V-Shaped HEPA Filter

AP-1800D

RP-20	20 x20 in. Rigid Polyester Filter
PF19	19 x 19 x 1.4 in. Pleated Media Filter
CF35-490	19 x 19 x 1.4 in. Thick Activated Carbon Filter
HEPA-300-490PV ...	19 x 19 x 11.5 in. V-Shaped HEPA Filter

AP-2500D

RP-24	24 x 24 in. Stage 1 Pre-Filter
PF-23	23 x 23 in. Pleated Media Filter
CF50-595 (optional)	23 x 23 x 1.4 in. Thick Activated Carbon Filter
HEPA-300-PV	23 x 23 x 11.5 in. Thick V-Shaped HEPA Filter



ULV FOGGER LINE

XPOWER's line of ULV (ultra-low volume) cold foggers offer ultimate performance in a lightweight and compact design. The flow rate of solutions is adjustable and produces an average droplet size of 50 microns and smaller. Monitoring solution volume is made easy with the reservoir level window located on the side. Refilling/Emptying disinfectants, sanitizers, and other solutions is convenient by removing the tank cover on the back of each unit.

Corded Cold Foggers

The corded units (F-8 & F-16) are ideal for a variety of full coverage applications including: anti-microbial application and air/surface disinfecting applications for office, restaurants/food services, schools, hospitals, senior centers, pet boarding, greenhouse, commercial properties and other places of business.



Rechargeable Cordless Foggers

Cordless, rechargeable lithium ion battery units (all models "B") provide upwards to 16 minutes (F-8B) to 32 minutes (F-16B) of continuous use. All cordless B units (battery) fully charge within 3 hours.



Rechargeable DC Brushless

The DC Brushless Motor series features more powerful and better energy efficiency. DC Brushless F-18B and F-35B offer extended coverage with continuous run times of 30-50 minutes (F-18B) and 50-85 minutes (F-35B) of battery life.



Adjustable flow rate for precise application in various jobs



PRODUCT FEATURES



Droplet Size / Flow Rate Adjustment



Easy Fill Reservoir



2 Flow Rate Nozzles



Power Cord F-8 & F-16



Reservoir Level Window to Monitor Liquid Levels

Model	HP / Watts	Amperage	Spraying Distance	Tank Capacity	Weight
F-8	320 W	3 Amps	25+ Ft.	800ml (27 fl. oz.)	4.85 Lbs.
F-16	500 W	4 Amps	30+ Ft.	1600ml (54 fl. oz.)	6.1 Lbs.
F-16B	350 W	~	25+ Ft.	1200ml (40.4 fl. oz.)	5.73 Lbs.
F-18B	320 W	~	39+ Ft.	1200ml (40.4 fl. oz.)	5.95 Lbs.



Come Dry With Us



VISIT US AT
WWW.XPOWER.COM