

# RESTORATION

## **WATER** **FIRE** **MOLD**

Dehumidifiers - Air Scrubbers - Air Movers

Pressurized Wall Cavity Dryers - Foggers - Ozone Generators

Maximize Capacity | Maximize Productivity | Maximize Profitability



## XPOWER's State of the Art Rotational Molding Machine

### Who We Are

XPOWER Manufacture Inc. brings over 25 years of experience developing an expanding series of professional and consumer products with the most advanced technology in today's market. By creating a fully integrated design with state-of-the art miniaturization, XPOWER's innovative products are lightweight, quiet, rugged and affordable – without sacrificing power or durability.

In partnership with its distributor network, XPOWER and its R&D engineers welcome new ideas and creative thinking to develop quality products for a profitable and long term relationship. XPOWER capitalizes on its global presence in its pursuit of enthusiastic and ambitious product distributors.

### Precision Manufacturing

XPOWER is continuously identifying and investing in advanced manufacturing technologies, including CNC injection molding equipment and a robust R&D team. Our highly trained engineering department is an active participant in the creation of fully integrated motor, housing, and fan designs.

The result – finished products that create and enhance opportunities while also conforming to the highest standards of efficiency, balance, and reliability.

### Global Organization

XPOWER seeks to provide maximum value with a combination of superior product quality and service. A worldwide presence created manufacturing for both 115V and 230V equipment for global distribution. US, direct import and OEM private label container orders enjoy prompt fulfillment from extensive inventory, thanks to world-class factory production capacity.

For product or parts assistance, XPOWER's customer service team offers comprehensive support for distributors and end users, assuring a first-class customer experience.

### Standards & Safety

XPOWER ensures product safety controls and maintains the highest production standards in the industry, with thermally protected motors that have globally recognized safety certifications.

Our world-class factory meets the rigorous standards required by big box retailers – ensuring consistent product quality standards and ethical working conditions are maintained.

To assure you of our commitment to quality, all XPOWER products have a 1 year limited manufacturer's warranty.



# Table of Contents

**pg 4 - 7**

## RESTORATION CERTIFICATION COURSES & TRAINING CENTERS

Reets Drying Academy



Ritcon Training and Consulting



Restoration Academy LLC



The Academy of Textiles and Flooring



**pg 9 - 11**

## DEHUMIDIFIERS

XD-125  
XD-85L2  
XD-125L  
XD-165L

**pg 12 - 13**

## PRESSURIZED WALL CAVITY DRYERS

PDS-21  
PDS-12  
Lay-Flat Duct Connectors or D-Ring

**pg 14 - 15**

## CENTRIFUGAL AIR MOVERS

P-230AT  
X-400A  
X-600A

**pg 16 - 17**

## LOW PROFILE AIR MOVERS

PL-700A  
XL-730A

**pg 18 - 19**

## PROFESSIONAL AXIAL FANS

P-21AR  
P-26AR  
X-39AR  
X-47ATR

**pg 20**

## HIGH TEMP AXIAL FANS

X-35AR  
X-48ATR

**pg 21**

## CONFINED SPACE FANS

X-8  
X-12

**pg 22 - 23**

## OZONE GENERATOR FANS

M-25

**pg 24 - 29**

## COMMERICAL AIR SCRUBBERS

X-2480A  
X-2580  
X-3400A  
X-3580  
X-4700AM  
AP-2000  
AP-1500D  
AP-1800D  
AP-2500D

**pg 30 - 31**

## ULV COLD FOGGERS

F-8  
F-8B  
F-16  
F-16B  
F-18B  
F-35B



# REETS DRYING ACADEMY



## Jeremy Reets

Our sole purpose here at Reets Drying Academy is education. We are invested in your success as a business and as part of that we offer additional support that extends past your visit with us.

Our teachers have in the field experience and have owned their own restoration companies. They will be able to relate to you in all aspects or trials you may face daily. Helping you with those problems you may be facing and getting you all ready to tackle those hard jobs with new found confidence and knowledge.

Whether its our in house IICRC classes or our online training, we are confident you will walk away filling your tool belt with all of the necessary tools for success.

We look forward to talking with all of you soon!

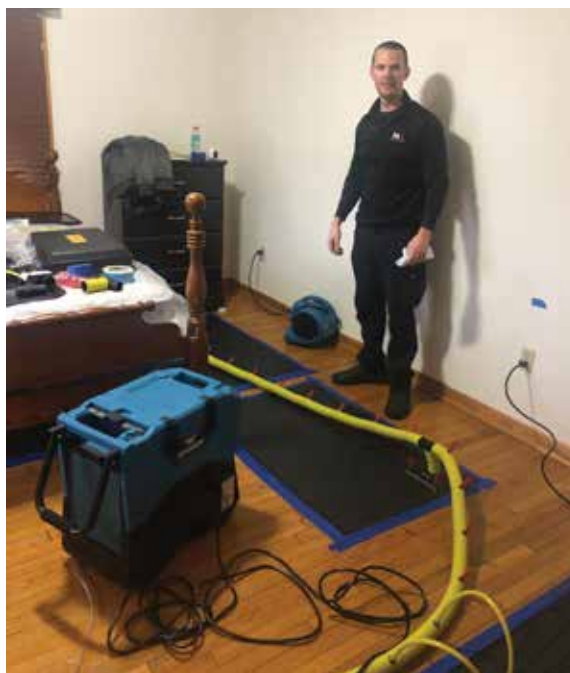


# RITCON DISASTER TRAINING & CONSULTING

**RITcon**  
Disaster Services  
Training and Consulting

## Ken Sellers

RITcon Training is dedicated to the advancement of knowledge in the property damage restoration industry. We offer many classes which include IICRC and IOTC certifications, continuing education, insurance CEC credits, custom hands on training and private training at your facility as well as classes at our Winchester, VA Training center. The training center was built to offer the MOST comprehensive hands on training in the country. RITcon Disaster Services was formed with over 25 years of industry experience by Ken Sellers. RITcon provides a variety of property damage restoration, mitigation, remediation and estimating services. Our consulting and project management associates have over 100 years of cumulative industry experience ranging from large loss water mitigation, fire damage restoration, mold remediation, document review and expert witness services. Additionally, our project management team can manage both small and large construction rebuilds as well as estimate review and budgeting.





# RESTORATION ACADEMY LLC



## Bryan Brainerd -IICRC WRT, ASD, WRT/ASD

Bryan Brainerd has been in the Restoration industry for over 25+ years and a IICRC approved instructor since 2000. He has been teaching for 19+ years in courses such as, Water Restoration Technician (WRT), Fire Smoke Restoration Technician (FSRT), Applied Structural Drying Course (ASD), and the WRT/ASD Combo Course. Bryan Brainerd is an esteemed committee member on the IICRC, FSRT, ASD, WRT, and TAC committee.

Restoration Academy LLC was founded in 2012 by Bryan Brainerd. Bryan has been involved in restoration since 1994 and instructing since 2000. Prior to starting Restoration Academy, Bryan worked for Paul Davis (Franchisor) as the Director of Emergency Services, overseeing training and operation compliance with the network of franchises. Prior to Paul Davis, Bryan worked with ServPro of North Indianapolis as well as their Director/Trainership, consulting on a wide variety of restoration jobs. Bryan has developed training programs for employees, managers and owners of several restoration firms.



**Bryan Brainerd**



**Restoration Academy  
Flood House**



**Restoration Academy Training**



**Centrifugal**



**PDS-12**



**PDS-21**



**Axial Fan**



**LGR Dehumidifier**



**Low Profile**

# THE ACADEMY OF TEXTILES AND FLOORING



## Nate Seward

Our Primary Training Courses maintain a comfortable and innovative learning opportunity that educates students of proper industry standards. With multiple training platforms, including interactive online courses and a flood house, students will benefit from a more "hands on experience". Our warehouse and testing center is equipped with training modules that simulate residential and commercial settings to help provide the best real life situations possible.

We have numerous types of equipment for you to "play" with from the world's leading manufacturers in drying and restoration equipment. ATF does not endorse any manufacturer or brand, our mission is to provide our students with science-based technology facts, completely unbiased so that the student can make their own decision on what works best.



The Academy Of Textiles And Flooring



The Academy Of Textiles And Flooring



Wood Floor



PDS-21



90° Drying



Ceiling Dry



Axial Action



LGR Dehumidifer



# XD-125

76 PPD @AHAM



The XPOWER XD-125 Commercial Dehumidifier is designed to maximize water extraction while combining the highest efficiency in performance and portability. A rugged and compact design allows for easy storage, while the durable housing construction withstands rough handling. Semi-pneumatic wheels make transport and maneuver on job sites a snap. The XD-125's unique operating features make it the perfect machine for not only water damage restoration jobs, but also for a multitude of commercial and industrial applications where humidity control is required.

- XD-125 Operating Features -----
- 76 pints/day @ AHAM (80° F, 60% RH)
  - Space Saving Compact Design
  - Pneumatic Wheels Maximize Transporting
  - Rugged Handle Increases Maneuverability

**Xactimate Code: WTRDHM> (L)**



Control Panel

Filter



Transportation Handle

Wheels



Cord Storage

Model	Water Removal @AHAM	Water Removal @ Full Saturation	Operating Range	Amperage	Airflow	Weight
XD-125	76 Pints Per Day	125 Pints Per Day	33° F - 100° F	7.3 Amps	235 CFM	81 Lbs.
XD-85L2	85 Pints Per Day	145 Pints Per Day	33° F - 100° F	6.7 Amps	180 CFM	70.5 Lbs.





# XD-85L2

85 PPD @AHAM

The XPOWER XD-85L2 Large capacity compact LGR Dehumidifier is the latest in Advanced Humidity Control Technology. With a patented High Efficiency Dual Intake System, the XD-85L2 has become the highest output Low Grain Refrigerant Dehumidifier in its class.

Boasting 85 PPD @ AHAM (80°F / 60% RH), this LGR Dehumidifier draws 6.7 amps and includes all the features you have come to expect from a professional grade manufacturer. A digital display, smart controls, integrated handles, and self-purging water pump makes this 70.5 LB 180 CFM powerhouse the dehumidifier of choice.

**Xactimate Code: WTRDHM> (L)**

Available Colors:  



## Stainless Steel Filter

Next Generation of LGR Dehumidifier Filters are now available! A Washable Stainless-Steel filter maximizes the performance of the XD-85L2 with added protection against foreign matter that may cause damage passing through the intake.



Stackable



Collapsible Handle



Power Cord/ Hose Storage

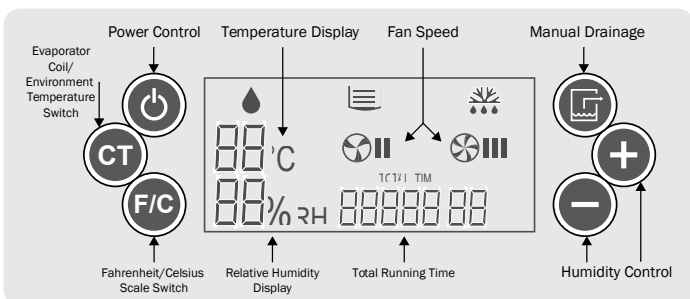


Programmable Humidity & Digital Display

Duct Adapter

Wheels

Drainage Connector



# XD-125L

125 PPD @AHAM



The XPOWER XD-125L Low Grain Refrigerant (LGR) Dehumidifier is the newest member of the XPOWER LGR dehumidifier line. The XD-125L LGR Dehumidifier achieves maximum humidity control and water removal efficiency. This all new “XL” category unit is capable of removing up to 125 Pints per day @ AHAM (80°F, 60% RH) and 220 pints per day at full saturation (90°F, 90% RH). The XD-125L LGR Dehumidifier has an electronic display that assists in monitoring the temperature and humidity at the exhaust and inlet, as well as recording the total operating life of the dehumidifier.

This unit features wheels with a foldable handle that saves space and can be extended for easy maneuverability. The XD-125L produces 420 CFM and

features a large exhaust with ducting ring for optimized drying capability. Stackable up to 3 units high for storage.



Drainage  
Connector

The XD-125L is ideal in educational institutions, hospitality, manufacturing, places of business, residential, retail, warehousing, & other mid-sized indoor spaces experiencing water damage issues. It's a vital tool in battling moderate to range water losses.

**Xactimate Code: WTRDHM>> (XL)**



Collapsible  
Handle

Stainless  
Steel Filter



Digital Display

## Stainless Steel Filter

Next Generation of LGR Dehumidifier Filters are now available! A Washable Stainless-Steel filter maximizes the performance of the XD-125L with added protection against foreign matter that may cause damage passing through the intake.



Power Cord /  
Hose Storage

Model	Water Removal @AHAM	Water Removal @ Full Saturation	Operating Range	Amperage	Airflow	Weight
XD-125L	125 Pints Per Day	220 Pints Per Day	33°F – 105°F	TBA	420 CFM	TBA
XD-165L	165 Pints Per Day	280 Pints Per Day	33°F – 105°F	10.2 Amps	476 CFM	121.3 Lbs

# XD-165L

165 PPD @AHAM



The XPOWER XD-165L Low Grain Refrigerant (LGR) Dehumidifier is the newest member of the XPOWER LGR dehumidifier line. The XD-165L LGR Dehumidifier achieves maximum humidity control and water removal efficiency. This all new "XXL" category unit is capable of removing up to 165 Pints per day @ AHAM (80°F, 60% RH) and 280 pints per day at full saturation (90°F, 90% RH). The XD-165L LGR Dehumidifier has an electronic display that assists in monitoring the temperature and humidity at the exhaust, as well as recording the total operating life of the dehumidifier.

This unit features wheels with an adjustable/collapsible handle that saves space and can be extended for easy maneuverability. The XD-165L produces 476 CFM and features a large exhaust with dual layflat ducting rings for optimized drying capability. Stackable up to 2 units high for storage.

The XD-165L is ideal in educational institutions, hospitality, manufacturing, places of business, residential, retail, warehousing, & other large indoor spaces experiencing water damage issues. It's a vital tool in battling mid to larger range water losses.

**Xactimate Code: WTRDHM>>> (XXL)**



Digital Display



Power Cord /  
Hose Storage



Stainless Steel Filter



Drainage  
Connector



Collapsible Handle





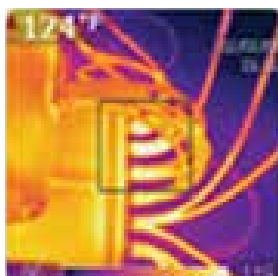
## PDS-21

*Heat to 205°F*

**Heat to 205°F.** There is no air mover motor, no squirrel cage, and no attachments. The PDS-21 is an all-in-one containment which makes this revolutionary product easy-to-use for big and small jobs alike. The PDS-21 makes drying easier and less frustrating than before. It is perfect for under sinks or behind cabinets and permanent furniture. Its portability makes drying a breeze.

- Pressurized air flow
- Most even airflow
- Built-in cord wrap
- Light Weight
- Easy grip handle
- On-board plug-off system
- Self healing thermal protection
- Stackable for storage

**Xactimate Code: WTRWALL (Wall Cavity Drying - Inj. Type)**





## PDS-12

Introducing the next generation of compact equipment made available by **XPOWER**. The **PDS-12** is a lightweight wall cavity dryer that quietly delivers **heated air** for drying under sinks, behind cabinets, and permanent furniture. Equipped with a **variable speed switch**, Professional Restorers now have complete control of the airflow for any drying application.

**Xactimate Code: WTRWALL (Wall Cavity Drying - Inj. Type)**

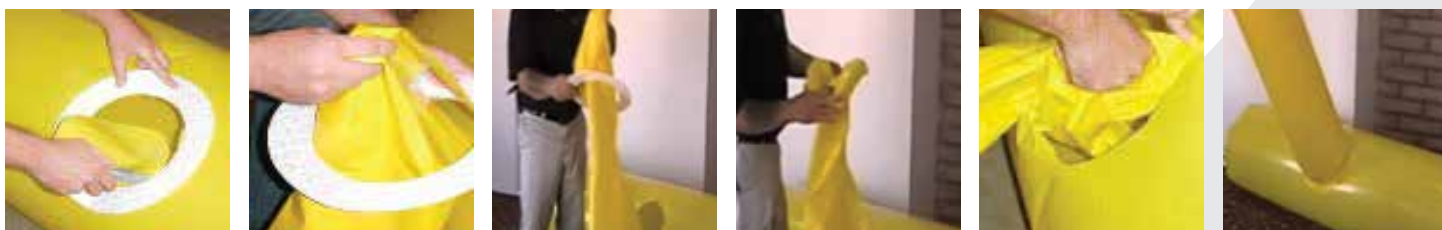
Model	HP / Watts	Airflow	Speed	Amperage	Weight
PDS-21	1200 W	92 CFM	1 Speed	9 Amps	19 Lbs.
PDS-12	4 HP	160 CFM	Variable Speed	12 Amps	12.3 Lbs.

## Lay-flat Duct Connectors



### D-Ring (24 Pack of 18" & Pack of 12", 8" and 6")

No more staples, tape or hog rings! The **D-Ring** is **the fastest** and **easiest** way to make lay-flat duct **connections**. Save time, money and manpower. The D-Ring provides the greatest airflow of any method now in use. Ducts can be connected by one in just seconds. Best of all, they are reusable. A box of D-Rings contains 24 of any individual size 18 inch, 12 inch, 8 inch and 6 inch. **Fits any size lay-flat from 24" to 6"**





# P-230AT

AIR MOVER

925 CFM, 2.3 AMP

This lightweight 3-speed power house draws only 2.3 amps and produces 925 CFM to dry those hard-to-reach places. The 2 built-in daisy chain power outlets makes this 10.2 Lbs. champ a must-have fan for any restorer.

Xactimate Code: WTRDRY

Available In:



# X-400A

AIR MOVER

1600 CFM, 3.0 AMP

This is the staple XPOWER Restoration Fan. This high output 3-speed air mover produces 1600 CFM. Built-in daisy chain power outlets integrated with the signature XPOWER lightweight high performance design makes this compact 17.2 Lbs. air mover a vital addition to your arsenal of Professional Restoration equipment.

Xactimate Code: WTRDRY



Model	HP / Watts	Amperage	Airflow	Speed	Weight
P-230AT	1/4 HP	2.3 Amps	925 CFM	3 Speed	10.2 Lbs.
X-400A	1/4 HP	3 Amps	1600 CFM	3 Speed	17.2 Lbs.





## X-600A AIR MOVER

**2,400 CFM, 3.8 AMP**

This Professionals Choice weighs in at less than 22 Lbs., making the X-600A the lightest, most compact air mover in its class. Drawing only 3.8 amps, restorers can confidently daisy chain this 2400 CFM workhorse using the on-board GFCI outlets.

- Powerful & energy efficient 1/3 HP induction motor
- 25 ft. power cord with wrap-around cord design
- Built-in GFCI power outlets for daisy chain
- Stackable up to 4 units high for easy storage
- Lightweight, compact and durable ABS plastic housing design

**Xactimate Code: WTRDRY**

Available In:



Stackable

### Features



Daisy Chain



Operating Positions

Model	HP / Watts	Amperage	Airflow	Speed	Weight
X-600A	1/3 HP	3.8 Amps	2400 CFM	3 Speed	21.5 Lbs.

# PL-700A

1050 CFM, 2.8 AMP

The XPOWER PL-700A is a compact 3-speed 1050 CFM low profile air mover. Designed and constructed from durable polypropylene, this 1/3 HP motor draws 2.8 amps and can be daisy chained utilizing the 2 built-in power outlets. A large intake and strategically placed vents on the underside will generate the airflow needed to effectively dry floors. This air mover can be stacked upwards to 6 units with its deep nested design.

**Xactimate Code: WTRDRY**

Available In:



## Features



3 Speed



Daisy Chain



2 Operating Positions



Daisy Chain  
(up to 4 units)





# XL-730A

*1150 CFM, 2.8 AMP*

Designed with the restorer in mind, the 5-speed XPOWER XL-730A Low Profile Air Mover features a 1/3 HP sealed induction motor that produces 1150 CFM and draws only 2.8 amps in the high setting. Daisy chain capability made possible with the 2 on-board GFCI outlets. The rugged ABS housing with deep nest design allows for secure stacking upwards to 6 units high for easy storage.

**Xactimate Code: WTRDRY**



**Secure Stacking**



**Bookshelf Stacking**



Model	HP / Watts	Amperage	Airflow	Speed	Weight
PL-700A	1/3 HP	2.8 Amps	1050 CFM	3 Speed	19.8 Lbs.
XL-730A	1/3 HP	2.8 Amps	1150 CFM	5 Speed	22.9 Lbs.





## P-21AR

*1100 CFM, 0.6 AMP*

The P-21AR offers the capability and versatility of drying spaces that have limited accessibility. The barrel-like POD housing mounted on a 360° tilt adjustable stand provides a steady 1100 CFM of directional airflow to efficiently target those areas affected by damaging moisture. This lightweight, stackable 4-speed micro mini axial draws a mere 0.6 amps and can be daisy chained to multiple units with the built-in power outlets.



## P-26AR

*1300 CFM, 1.0 AMP*

The P-26AR Restoration Suppressor is a lightweight 4-speed micro mini axial that will help you overtake any water damage situation. This 1.0 amp fan fires 1300 CFM and can be daisy chained with the integrated power outlets. The barrel-like housing with advanced air fin technology mounted on a 360° tilt adjustable stand will help you quietly target those problematic flood zones.



## X-39AR

*2100 CFM, 1.6 AMP*

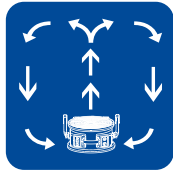
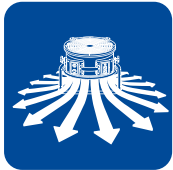
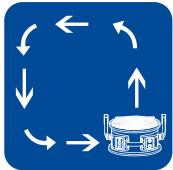
The XPOWER X-39AR axial fan is a powerhouse that offers maximum CFM output while efficiently drawing less than 2 Amps at its highest speed. A specially designed fan grille excels in extending a powerful and focused straight stream of air up to 60 ft.

**Xactimate Code: WTRDRY+**



## X-47ATR

**3600 CFM, 2.8 AMP**



The X-47ATR is easily the most compact and versatile axial fan on the market today. Weighing less than 23 Lbs., this 3600 CFM beast draws 2.8 amps and can be safely daisy chained with the 2 on-board power outlets. Every unit comes fully assembled with a removable 360° tilt adjustable stand. A high torque sealed motor paired with an advanced air fin technology ensures continuous directional airflow upwards to 60 feet.

**Xactimate Code: WTRDRY+**



**Stackable**



**Daisy Chain  
(up to 4 units)**



**360° Rotation**

Model	HP / Watts	Amperage	Airflow	Speed	Weight
P-21AR	69 W	0.6 Amps	1100 CFM	4 Speed	10.4 Lbs.
P-26AR	115 W	1 Amps	1300 CFM	4 Speed	11.7 Lbs.
X-39AR	1/4 HP	1.6 Amps	2100 CFM	Variable Speed	16.5 Lbs.
X-47ATR	1/3 HP	2.8 Amps	3600 CFM	Variable Speed	22.2 Lbs.





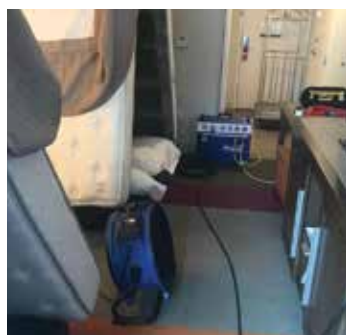
# X-35AR / X-48ATR

1720 - 3600 CFM, 1.6 - 2.8 AMP

The XPOWER line of heat resistant fans are capable of operating in room temperatures up to 180 degrees Fahrenheit and can be used in conjunction with heaters to circulate hot air. Ideal for pest control and water damage restoration applications, these units feature variable speed control, low amp draw, a 3 hour timer, 360-degree rotation stand, and built in power outlets to daisy chain. The unique housing design provides a powerful and extended focused stream of air upwards to 95 ft. XPOWER Hi-Temp fans are equipped with sealed motors to protect it from contaminants in harsh conditions. The super lightweight design allows for easy transport and can be stacked up to 5 units high.

## XPOWER Hi-Temp Operating Features

- Designed for heated work environments upwards to 180°F / 80°C
- Ideal for pest control and restoration applications using heat
- SEALED Motor provides protection in adverse conditions
- Low Amp Draw with 1720-3600 CFM Max. Airflow Capacity



HI-TEMP  
RESISTANT 180°F

SEALED  
MOTOR  
To Resist Corrosion

3-HOUR  
TIMER  
Set & Forget



Model	HP / Watts	Amperage	Airflow	Speed	Weight
X-35AR	1/4 HP	1.6 Amps	1720 CFM	Variable Speed	17.6 Lbs.
X-48ATR	1/3 HP	2.8 Amps	3600 CFM	Variable Speed	25.6 Lbs.



# X-8 / X-12

1200 - 2600 CFM, 2.5 - 6.0 AMP

Already an industry favorite, the XPOWER line of compact, variable speed confined space ventilators will provide complete airflow control to where it is lacking the most. Whether introducing or drawing air with the different ducting options, these powerful, low amp units with sealed motors will create the necessary air movement to get the job done.

**Xactimate Code: WTRDRY+**

## DUAL SIDED DUCTABLE RINGS



Pull air in or Push air out



## ACCESSORIES



### 8DH25

X-8 8 Inch  
Duct Hose (25 Ft)

### 12DH25

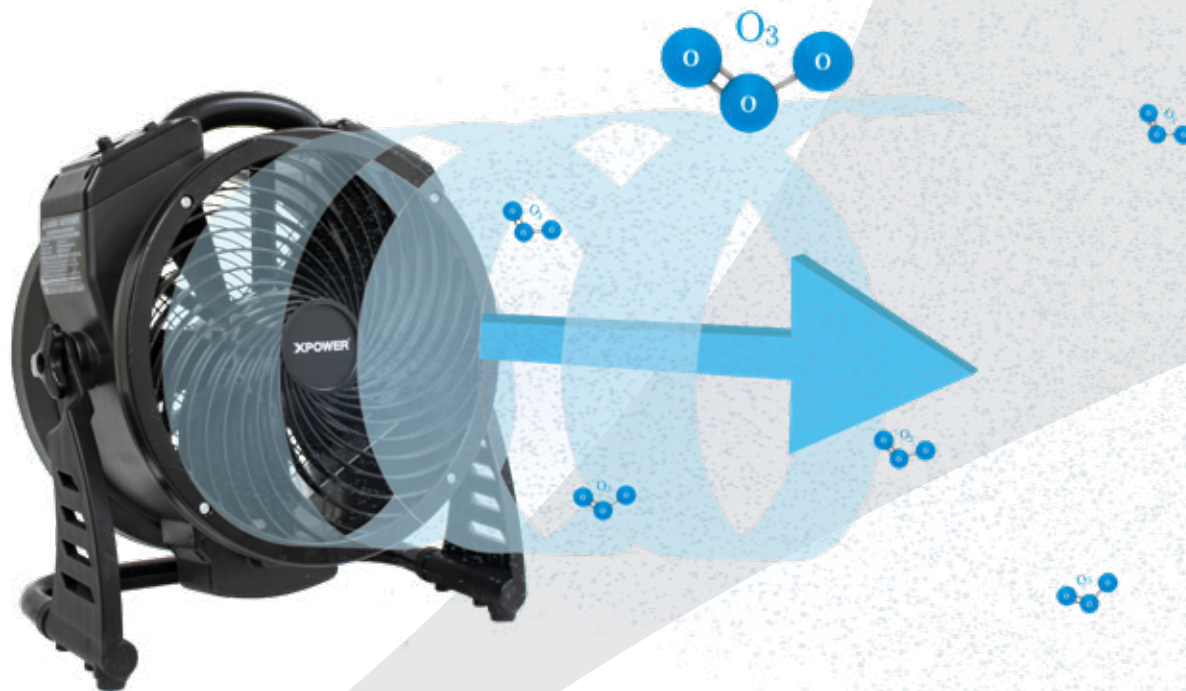
X-12 12 Inch  
Duct Hose (25 Ft)

### 8DHC25

X-8 Duct Hose Carrier  
with 25 Ft Duct Hose



Model	HP / Watts	Amperage	Airflow	Speed	Weight
X-8	1/3 HP	2.5 Amps	1200 CFM	Variable Speed	13.5 Lbs.
X-12	1/2 HP	6 Amps	2600 CFM	Variable Speed	23.4 Lbs.



## M-25

*1450 CFM, 1.2 AMP*

XPOWER's Axial Air Mover with built-in commercial ozone generator features a 5,000mg/hour ozone generator (M-25/M-25B model) & a 10,000mg/hour ozone generator (M-27 model). A brushless DC motor offers ultimate energy efficiency and powerful extended airflow with penetrating ozone coverage. The M-25B takes ozone treatment to another level of versatility and convenience with its cordless battery operated feature. The M-25/B & M-27 is perfect for sanitizing and deodorizing medium to large areas such as hotel suites, homes, offices, basements, and more. It will eliminate the most severe odors caused by mold, mildew, tobacco, fire and smoke, water and flood damage, animals, and more.



XPOWER's air movement technology leads the industry in performance and versatility for your needs. Brushless DC motors produce large amounts of torque to propel huge volumes of air for whole room circulation and more thorough ozone application. An advanced housing design paired with a deep pitch fan blade creates a focused and extended pattern of airflow. All these features coupled with an industrial grade ozone generator and you have the ultimate axial fan with ozone generator that aides in applying ozone in small, medium, and large spaces. A variable speed control allows for dialing in precise volumes of air movement and a 360-degree stand is included for directing air & ozone where it's needed most.

Featuring an Always-On setting, a 3-hour Set-N-Forget timer, a separate on/off toggle switch for the ozone generator, and an ozone indicator light for safety. With the ability to turn the ozone generator off independently, you can utilize this unit as a standard air mover for cooling, ventilating, and drying purposes. Dual purpose air mover/ozone generator, this is truly unique to the market.



## PRODUCT FEATURES



- Industrial Ozone Generator
- Ozone Indicator Light
- On/Off Switch & 3Hr Timer

Wrap Around  
Cord Design



Brushless DC Motor Maximum  
Energy Efficiency



Variable  
Speed Control

High Torque Motor  
+ Deep Pitch Fan  
Blade for Maximum  
Extended Airflow



Fully Installed Rack Stand  
Allowing 360° Angle Rotation



Stackable  
(Up to 5 units)



Ozone Plate

Model	HP / Watts	Amperage	Airflow	Speed	Weight
M-25	115 W	1.2 Amps	1450 CFM	Variable Speed	12.8 Lbs.
M-25B	90 W	1 Amps	1200 CFM	Variable Speed	13.5 Lbs.
M-27	145 W	1.5 Amps	1450 CFM	Variable Speed	12.8 Lbs





## X-2480A

550 CFM, 2.8 AMP

Less space, increased profitability. The lightweight **XPOWER X-2480A Mini HEPA Air Scrubber / Negative Air Machine** is a high performance air purifier in a compact design. This **550 CFM 3-Stage Air Scrubber** draws **2.8 amps** and includes a foam cover for the intake to prevent contamination. The **lightweight stackable ABS** housing includes **2 on-board power outlets** for daisy chain capability and an indicator light that illuminates when filters require attention.

**Xactimate Code: WTRNAFAN**

## X-2580

550 CFM, 2.8 AMP


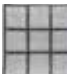
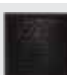


The XPOWER X-2580 Mini HEPA Air Scrubber with Charcoal Filter is a compact high performance air purifier ideal for fire/smoke and odor remediation. This 550 CFM 4-Stage Air Scrubber draws 2.8 amps and can be used for creating Negative Air Pressure. The lightweight stackable ABS housing includes an activated charcoal filter capable of removing airborne volatile organic compounds (VOC), food odors, smoke, fumes from paint & thinners, and other malodors. Each unit features a filter change light that illuminates when filters require attention.

**Xactimate Code: WTRNAFAN**



**Charcoal Filter**

### REPLACEMENT FILTERS

	X-2480A	X-2580	X-3400A	X-3580
 WASHABLE OUTER NYLON MESH FILTER	-	<b>NFR9</b> (9 in.)	-	<b>NFR12</b> (12 in.)
 WASHABLE NYLON MESH FILTER	<b>NFS13</b> (13x13 in.)	<b>NFS13</b> (13x13 in.)	<b>NFS16</b> (16x16 in.)	<b>NFS16</b> (16x16 in.)
 ACTIVE CARBON FILTER	-	<b>CF15</b> (13x13 in.)	-	<b>CF35</b> (16x16 in.)
 PLEATED MEDIA FILTER	<b>PF13</b> (13x13 in.)	-	<b>PF16</b> (16x16 in.)	-
 HEPA FILTER	<b>HEPA35-33</b> 1.4 in. Thick (13x13 in.)	<b>HEPA35-33</b> 1.4 in. Thick (13x13 in.)	<b>HEPA50</b> 2 in. Thick (16x16 in.)	<b>HEPA35</b> 1.4 in. Thick (16x16 in.)

Model	HP / Watts	Amperage	Airflow	Speed	Weight
X-2480	1/2 HP	2.8 Amps	550 CFM	5 Speed	23.6 Lbs.
X-2580	1/2 HP	2.8 Amps	550 CFM	5 Speed	23.6 Lbs.



## X-3400A

600 CFM, 2.8 AMP

Developed to restore indoor air quality in a variety of applications, the XPOWER X-3400A HEPA Air Scrubber / Negative Air Machine efficiently produces **600 CFM** to effectively capture bacteria, allergens, mold, and sub-micron sized dust contaminants while only drawing **2.8 amps**. The variable speed switch and filter change indicator light provides complete operating control. A durable ABS housing with on-board GFCI power outlets ensures that this stackable **28 Lbs.** machine can be transported with ease.

**Xactimate Code: WTRNAFAN**



**Nylon Mesh Washable Filter**  
Easily cleaned and washable for long term use. This durable pre-filter prolongs the life of subsequent filter stages.



## X-3580

600 CFM, 2.8 AMP

Developed to restore indoor air quality in spaces affected by smoke and odors, the XPOWER X-3580 HEPA Air Scrubber with Charcoal Filter produces 600 CFM to effectively remove airborne volatile organic compounds (VOC), odors, smoke, fumes, while capturing bacteria, allergens, mold, and sub-micron sized contaminants while only drawing 2.8 amps. The X-3580 features a filter change indicator light that notifies when filters require attention. The units weighs under 33 lbs and is stackable for easy transport or storage.

**Xactimate Code: WTRNAFAN**



**Charcoal Filter**

Model	HP / Watts	Amperage	Airflow	Speed	Weight
X-3400A	1/2 HP	2.8 Amps	600 CFM	Variable Speed	28.8 Lbs.
X-3580	1/2 HP	2.8 Amps	600 CFM	5 Speed	32.8 Lbs.

# X-4700AM

## 750 CFM, 4.5 AMP

The XPOWER X-4700AM 3 Stage HEPA Air Scrubber is a commercial air purification system that produces a maximum 750 CFM while drawing 4.5 Amps. Designed to restore indoor air quality in a variety of applications, the variable speed X-4700AM will utilize 3 stages of filtration to effectively remove airborne pollutants as small as 0.3 microns with a 99.97% efficiency rating. This unit features: an optional hour meter (X-4700AM), a variable speed control, 2 on-board GFCI power receptacles, a foam intake cap, a lightweight durable nested stacking design.




- Built-in GFCI power outlets for daisy chain
- Low 4.5 Amp draw with 750 CFM max. airflow capacity
- Filter change light indicator
- An integrated hour meter monitors billable time (X-4700AM)
- ETL/CETL safety certified



Stackable  
(Up to 4 units)



### X-4700AM

	WASHABLE NYLON MESH FILTER	<b>NFS16</b> (16x16 in.)
	PLEATED MEDIA FILTER	<b>PF16</b> (16x16 in.)
	HEPA FILTER	<b>HEPA50</b> 2 in. Thick (16x16 in.)







# AP-2000

2000 CFM, 8.5 AMP

The XPOWER AP-2000 Portable HEPA Air Filtration System provides high volume air exchanges required in abatement, dust control, and air scrubbing on large job sites contaminated by airborne pollutants. While drawing ONLY 8.5 AMPS, this lightweight Portable HEPA Air Scrubber produces an incredible 2000 CFM of air movement to efficiently remediate large spaces such as: hospitals, schools, arenas, gyms, conference halls, hotels, and any other largely occupied areas.

Moving the AP-2000 is made easy as it includes a 4 caster system (assembly required). The 2 stationary and 2 swivelling casters allow for easy horizontal maneuverability through any standard doorway. The durable polyethylene roto-molded housing features 4 integrated carrying handles, a strap tie down point, with nested stacking that secures the casters during the transport of multiple stacked units.



Filter	Name	SKUsv
	<b>Pre-Filter</b> 24 x 24 in.	NF24
	<b>Pre-Filter with Frame</b> 23 x 23 in.	NF24RP
	<b>Activated Carbon Filter</b> 24 x 24 in.	CF-50-595
	<b>12" Thick HEPA</b> 24 x 24 in.	HEPA300-WB



12" Exhaust Collar



Model	HP / Watts	Amperage	Airflow	Speed	Weight
X-4700AM	2/3 HP	4.5 Amps	750 CFM	Variable Speed	33.1 Lbs.
AP-2000	-	8.5 Amps	2000 CFM	2 Speed	112.4 Lbs.



## AP Series

1800 CFM, 8 AMP



The NEW XPOWER AP Line of Brushless DC Motor Upright Large Volume HEPA Air Filtration Systems with PM2.5 Sensors are AVAILABLE NOW! This new series of air scrubbers provides all the power needed for improving indoor air quality on large jobs, with the versatility of providing airflow in the lowest levels for all day ultra-quiet operation in settings like classrooms, business, and in occupied facilities where operating noise levels are important. All of this is accomplished through our revolutionary DC Brushless Motor, where power meets precision. While drawing only a MAXIMUM 1.5-8.0 Amps (unit specific), and rated at 700-1800 CFM, the XPOWER Upright AP

Line of HEPA Air Filtration Systems will provide the capability and ultimate versatility in high-volume air exchanges while featuring precise variable speed control. A new feature built-in the AP Line is our digital PM2.5 indoor air quality sensor. Color coded in green/orange/red with a digital readout to monitor your indoor air quality.

The AP Line of Brushless Upright HEPA Air Scrubbers are ideal in addressing indoor air quality issues in educational institutions, hospitality, manufacturing, places of business, residential, retail, warehousing, & other mid-sized to large indoor spaces.

\*\*\*NOTE\*\*\* The AP-1500D & AP-1800D are standard 4-Stage Filtration units equipped with Activated Carbon Filters. The AP-2500D is a standard 3-Stage Filtration System with an optional upgrade to include an Activated Carbon Filter.



12" Exhaust Collar

Model	HP / Watts	Amperage	Airflow	Speed	Weight
AP-1500D	170 W	1.5 Amps	700 CFM	Variable	45.9 Lbs.
AP-1800D	400 W	3.5 Amps	1100 CFM	Variable	65.7 Lbs.
AP-2500D	840 W	8.0 Amps	1800 CFM	Variable	95.1 Lbs.

## Filter Breakdown

### AP-1500D

<b>NFS16</b> .....	16 x 16 in. Washable Nylon Mesh Filter
<b>PF-16</b> .....	16 x 16 in. Pleated Media Filter
<b>CF35</b> .....	16 x 16 x 1.4 in. Thick Activated Carbon Filter
<b>HEPA-300-406PV</b> ...	16 x 16 x 11.5 in. V-Shaped HEPA Filter

### AP-1800D

<b>RP-20</b> .....	20 x20 in. Rigid Polyester Filter
<b>PF19</b> .....	19 x 19 x 1.4 in. Pleated Media Filter
<b>CF35-490</b> .....	19 x 19 x 1.4 in. Thick Activated Carbon Filter
<b>HEPA-300-490PV</b> ...	19 x 19 x 11.5 in. V-Shaped HEPA Filter

### AP-2500D

<b>RP-24</b> .....	24 x 24 in. Stage 1 Pre-Filter
<b>PF-23</b> .....	23 x 23 in. Pleated Media Filter
<b>CF50-595</b> .....	23 x 23 x 1.4 in. Thick Activated Carbon Filter
(optional)	
<b>HEPA-300-PV</b> .....	23 x 23 x 11.5 in. Thick V-Shaped HEPA Filter





## ULV FOGGER LINE

XPOWER's line of ULV (ultra-low volume) cold foggers offer ultimate performance in a lightweight and compact design. The flow rate of solutions is adjustable and produces an average droplet size of 50 microns and smaller. Monitoring solution volume is made easy with the reservoir level window located on the side. Refilling/Emptying disinfectants, sanitizers, and other solutions is convenient by removing the tank cover on the back of each unit.



### *Corded Cold Foggers*

The corded units (F-8 & F-16) are ideal for a variety of full coverage applications including: anti-microbial application and air/surface disinfecting applications for office, restaurants/food services, schools, hospitals, senior centers, pet boarding, greenhouse, commercial properties and other places of business.



### *Rechargeable Cordless Foggers*

Cordless, rechargeable lithium ion battery units (all models "B") provide upwards to 16 minutes (F-8B) to 32 minutes (F-16B) of continuous use. All cordless B units (battery) fully charge within 3 hours.

### *Rechargeable DC Brushless*

The DC Brushless Motor series features more powerful and better energy efficiency. DC Brushless F-18B and F-35B offer extended coverage with continuous run times of 30-50 minutes (F-18B) and 50-85 minutes (F-35B) of battery life.



Adjustable flow rate for precise application in various jobs



## PRODUCT FEATURES



Droplet Size /  
Flow Rate Adjustment



Easy Fill Reservoir



2 Flow  
Rate Nozzles



Shoulder Strap  
(F-35B Only)



Power Cord  
F-8 & F-16



Reservoir Level Window  
to Monitor Liquid Levels



Model	HP / Watts	Amperage	Spraying Distance	Tank Capacity	Weight
F-8	320 W	3 Amps	25+ Ft.	800ml (27 fl. oz.)	4.85 Lbs.
F-8B	280 W	~	20+ Ft.	600ml (20.2 fl. oz.)	4.4 Lbs.
F-16	500 W	4 Amps	30+ Ft.	1600ml (54 fl. oz.)	6.1 Lbs.
F-16B	350 W	~	25+ Ft.	1200ml (40.4 fl. oz.)	5.73 Lbs.
F-18B	320 W	~	39+ Ft.	1200ml (40.4 fl. oz.)	5.95 Lbs.
F-35B	320 W	~	39+ Ft.	2500ml (84.5 fl oz.)	7.43 Lbs.



***Come Dry With Us***



VISIT US AT  
***WWW.XPOWER.COM***